



2010/2011 Catalog

VMP

VIDEO MOUNT PRODUCTS

Mounting Systems For Video, Audio & Security...Nothing Holds Up Better!

About VMP

Since 1994, Video Mount Products (VMP) has been chosen by video, audio, custom install, security industry professionals and consumers alike. VMP's unmatched designs, famed reliability, and long term durability have become a staple for mounting applications across a wide variety of industries. During the past decade, VMP has embraced the widely recognized flat panel revolution by quickly updating and continually launching new flat panel mounts and accessories to grow alongside these ever evolving segments of the consumer and professional A/V markets. In 2010, VMP continues to be recognized as the mounting systems company of choice for those discerning professionals who demand variety in a product mix as well as requiring dependable mounts and accessories. VMP mounting systems are capable of holding a large variety of flat panels while incorporating numerous tilt and swivel capabilities to meet the needs of any and every customer and installation. VMP has never forgotten its roots and we continually offer and update our wide variety of mounting systems and accessories that proudly serve as VMP's core product foundation launched more than 16 years ago.

Customer satisfaction is VMP's number one goal. All VMP mounting systems are manufactured from tempered high grade steel and use durable powder coat finishes. Many models are UL listed for additional safety and reliability and all VMP products carry a **Forever Warranty** as well as offer peace of mind and simple, quick installation. Whether you are installing a large flat panel, projector, video surveillance/security system or antenna/satellite dish in a home, office, house of worship, retail or commercial outlet, or educational facility, VMP has the mounting solution for the job. We look forward to continually serving the professional A/V industry with the products they need and the reliability they have come to trust from VMP. After 16 years, we are still proud to say that "Nothing holds up better!"



345 Log Canoe Circle Stevensville, MD 21666

Toll Free 877.281.2169 Telephone 410.643.6390 Facsimile 410.643.6615

www.videomount.com ■ www.chooseamount.com

Table of Contents



4	Flat Panel Mounts
4	<i>Flush Wall Mounts</i>
6	<i>Flush With Tilt Wall Mounts</i>
7	<i>Articulating Wall Mounts</i>
8	<i>Ceiling Mounts</i>
9	<i>Specialized Mounts</i>
10	<i>Dual Mount Adaptors</i>
11	<i>Flat Panel Mount Adaptors</i>
12	Digital Signage Mounts & Accessories
14	Projector Mounts
16	Equipment Racks & Accessories
16	<i>Racks</i>
18	<i>Shelves</i>
20	<i>Rack Accessories</i>
22	Security Mounts
24	Mounting Accessories
30	Satellite & Antenna Mounts & Accessories
34	CRT Mounts
36	DLP Mounts & Turntables
37	Speaker Mounts
38	Resources & Index



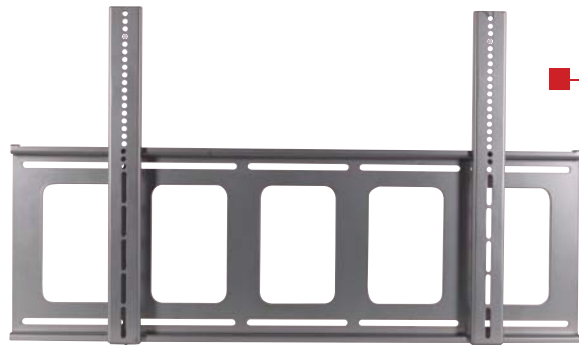
WARNING The installer of these products must verify that the mounting surface, ceiling or wall, will safely support the combined weight of all attached equipment and hardware. Video Mount Products will not be held liable for the improper use or installation of its products.

Flat Panel Mounts

Flush Wall Mounts



FP-LF Large Flat Panel Flush Mount



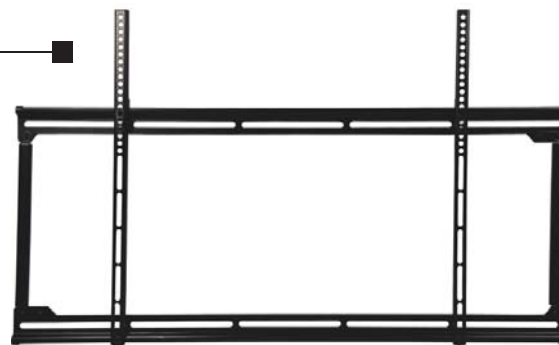
- Holds most 42" – 63" flat panels
- Distance from wall to the back of the flat panel - 1.4"
- Maximum flat panel hole pattern – 850mm x 500mm
- Accommodates double gang box
- Load capacity – 180 lbs
- Silver powder coat finish

FP-LFB Same as above except with black finish

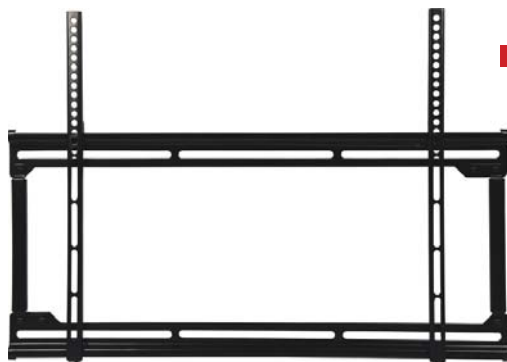
FP-LFVB Large Flat Panel Flush Mount

- Holds most 42" – 63" flat panels
- Maximum flat panel hole pattern – 890mm x 540mm
- Distance from wall to back of the flat panel – 0.85"
- Load capacity – 150 lbs
- Black powder coat finish

FP-LFV Same as above except with silver finish



FP-XMFB Extra Medium Flat Panel Flush Mount



- Holds most 32" – 52" flat panels
- Maximum flat panel hole pattern – 640mm x 430mm
- Distance from wall to back of the flat panel – 0.85"
- Load capacity – 150 lbs
- Black powder coat finish

FP-XMF Same as above except with silver finish

www.videomount.com

Flat Panel Mounts

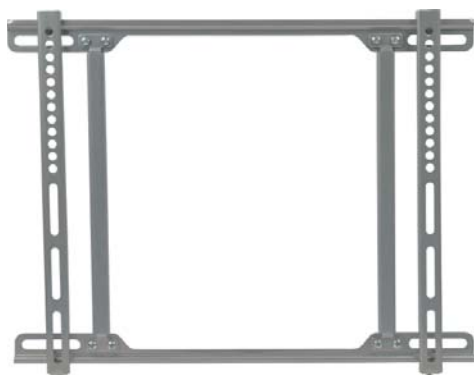
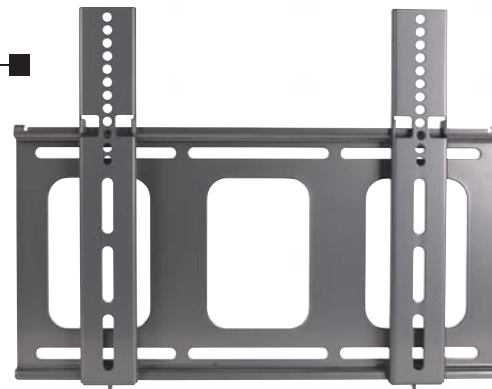
Flush Wall Mounts



LCD-MID-F *Mid-Size Flat Panel Flush Mount*

- Holds most 27" – 42" flat panels
- Maximum flat panel hole pattern – 410mm x 340mm
- Distance from wall to back of the flat panel – 1"
- Accommodates double gang box
- Load capacity – 100 lbs
- Silver powder coat finish

LCD-MID-FB *Same as above except with black finish*



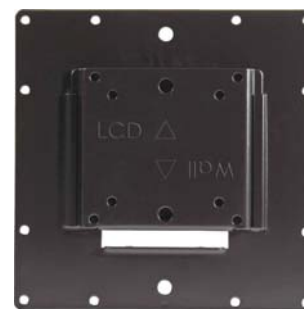
FP-MF *Mid-Size Flat Panel Flush Mount*

- Holds most 27" – 42" flat panels
- Maximum flat panel hole pattern – 440mm x 330mm
- Distance from wall to back of the flat panel – 0.7"
- Load capacity – 100 lbs
- Silver powder coat finish

FP-MFB *Same as above except with black finish*

FP-SFB *Small Flat Panel Flush Mount*

- Accommodates flat panels with 75, 100, 200 and 100 x 200mm VESA standards
- Holds most 10" – 30" flat panels
- Quick connect/disconnect design
- Distance from wall to back of the flat panel – 0.5"
- Utilizes tamper resistant screws to provide extra security
- Load capacity – 50 lbs
- Black powder coat finish

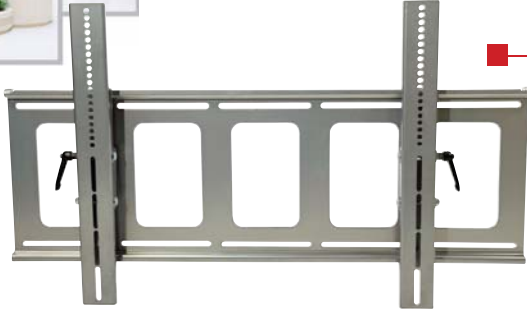


www.videomount.com



Flat Panel Mounts

Flush Wall Mounts With Tilt



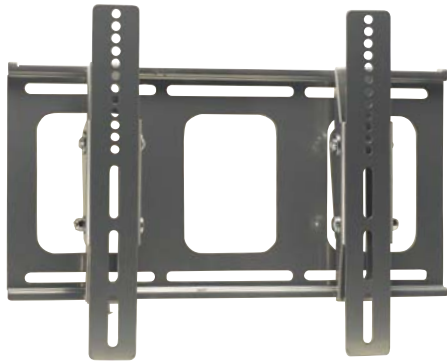
PDS-LFT Large Flat Panel Flush Mount With Tilt

- Holds most 42" – 63" flat panels
- Maximum flat panel hole pattern – 850mm x 530mm
- Adjustable tilt -5° to +15°
- Distance from wall to back of the flat panel – 2.6"
- Load capacity – 180 lbs / Silver powder coat finish

PDS-LFTB Same as above except with black finish

FP-LDSB Large Flat Panel Digital Signage Mount

- Holds most 32" – 63" flat panels in portrait or landscape
- Maximum flat panel hole pattern – 810mm x 530mm (810mm x 810mm with extensions)
- Adjustable tilt -5° to +15° lockable at 5° increments
- Sectional wall plate which can be integrated with multiple FP-LDSB's to create a video wall
- Distance from wall to back of the flat panel – 2.5" (2.6" w/ extensions)
- Load capacity – 180 lbs / Black powder coat finish



LCD-MID-FT Mid-Size Flat Panel Flush Mount With Tilt

- Holds most 27" – 42" flat panels
- Maximum flat panel hole pattern – 410mm x 340mm
- Distance from wall to back of the flat panel – 2.4"
- Has adjustable -5° to +15° tilt
- Accommodates double gang box
- Load capacity – 100 lbs / Silver powder coat finish

LCD-MID-FTB Same as above except with black finish

FP-SFTB Small Flat Panel Flush Mount With Tilt

- Holds most 10" – 23" flat panels
- Accommodates flat panels w/ 75 or 100mm VESA standards
- Adjustable tilt -5 to +15°
- Distance from wall to back of the flat panel – 1.7"
- Utilizes tamper resistant hardware
- Load capacity – 25 lbs / Black powder coat finish

FP-SFT Same as above except with silver finish



www.videomount.com

Flat Panel Mounts

Articulating Wall Mounts



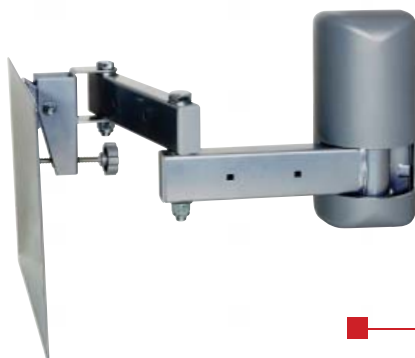
PDS-LWA *Large Flat Panel Articulating Wall Mount*

- Holds most 42" – 63" flat panels
- Maximum flat panel hole pattern – 950mm x 530mm
- Rotates 45° and has adjustable -5° to +15° tilt
- Depth 4" (Arms fully collapsed)
- Depth 24" (Arms fully extended)
- Includes cable management covers
- Load capacity - 180 lbs
- Silver powder coat finish

PDS-LWAB *Same as above except with black finish*



LCD-2537 *Multi-Configurable Mid-Size Flat Panel Articulating Wall Mount*



- Can be configured as a single arm, double arm or near flush mount w/ the parts provided
- Holds most 25" – 32" flat panels
- Accommodates flat panels w/ 75, 100, 200 and 100 x 200mm VESA standards
- Adjustable -5° to +20° tilt
- Rotates 240° at the elbow joint (double arm configuration)
- Rotates 160° at the wall / Rotates 240° at the panel
- Feed through wall plate with decorative cover
- Includes clip based cable management system
- Load capacity - 50 lbs / Silver powder coat finish

LCD-2537B *Same as above except with black finish*

LCD-I *Multi-Configurable Small Flat Panel Articulating Wall Mount*

- Can be configured as a single arm, double arm or near flush mount with parts provided
- Holds most 10" – 23" flat panels
- Accommodates panels w/ 75 or 100mm VESA standards
- Adjustable -5° to +20° tilt
- Rotates 240° at the elbow joint (double arm configuration)
- Rotates 160° at the wall / Rotates 240° at the panel
- Feed through wall plate with decorative cover
- Includes clip based cable management system
- Load capacity - 25 lbs
- Silver powder coat finish

LCD-IB *Same as above except with black finish*



www.videomount.com

Flat Panel Mounts

Ceiling Mounts

PDS-LC Large Flat Panel Ceiling Mount

- Holds most 37" - 63" flat panels
- Maximum flat panel hole pattern – 860mm x 500mm
- Mast telescopes 23" – 35" from ceiling
- Rotates 360° / Adjustable 0° – 15° tilt
- Cable management through the center of the mast
- Load capacity - 180 lbs / Silver powder coat finish

PDS-LCB Same as above except with black finish

LCD-MID-C Mid-Size Flat Panel Ceiling Mount

- Holds most 27" – 42" flat panels
- Mast telescopes 23" – 35" from ceiling
- Maximum flat panel hole pattern – 410mm x 340mm
- Rotates 360° / Adjustable -5° to +20° tilt
- Cable management through the center of the mast
- Load capacity – 100 lbs / Silver powder coat finish

LCD-MID-CB Same as above except with black finish

LCD-2537C Mid-Size Flat Panel Ceiling Mount

- Holds most 25" – 37" flat panels / Mast telescopes from 18" – 30"
- Accommodates flat panels w/ 75, 100, 200 and 100 x 200 mm VESA standards
- Rotates 360° (mast) / Rotates 240° (panel) / Adjustable -5° to +20° tilt
- Includes clip based cable management system
- Load capacity - 75 lbs / Silver powder coat finish

LCD-2537CB Same as above except with black finish

LCD-1C Small Flat Panel Ceiling Mount

- Holds most 10" – 23" flat panels / Mast telescopes 17"– 27" from the ceiling
- Accommodates flat panels with 75 or 100 mm VESA standards
- Rotates 360° (mast) / Rotates 240° (panel) / Adjustable -5° to +20° tilt
- Includes clip based cable management system
- Load capacity - 25 lbs / Silver powder coat finish

LCD-1CB Same as above except with black finish

LCD-1CW Same as above except with white finish

www.videomount.com

Flat Panel Mounts

Specialized Mounts



ER-LCDI017 LCD Monitor Rack Mount

- Holds most monitors 10" – 17" or can be inverted to hold monitors up to 23" / Recesses monitor into rack
- Accommodates monitors with 75mm and 100mm VESA standards / 9 space racking height
- Includes 10-32 and 12-24 rack screws
- Load capacity - 50 lbs
- Black static resistant powder coat finish



LCD-2 Small Flat Panel Table/Desk Mount

- Holds most 10" – 23" flat panels
- Accommodates flat panels with 75 or 100mm VESA standards
- Rotates 360° at base / Adjustable -5° to +30° tilt
- Force arm has adjustable 0° to 60° forward tilt
- Can be attached as a clamp-on or bolt through mount w/ parts provided
- Load capacity - 25 lbs / Silver powder coat finish

LCD-2B Same as above except with black finish

LCD-UCI LCD Under Cabinet Mount

- Holds most 10"– 17" flat panels
- Accommodates flat panels with 75 or 100mm VESA standards
- Can be flipped up to store LCD when not in use
- 360° swivel for optimum viewing
- Load capacity – 20 lbs / Silver powder coat finish

NOTE: Cabinet depth may limit screen size



TT-LCD20B Flat Panel Turntable

- Platform width 20" / Platform depth 14"
- Load capacity – 75 lbs / Black finish

TT-LCD20S Same as above except with silver finish



www.videomount.com



Flat Panel Mounts

Dual Mount Adaptors



Adaptor shown with LCD-MID-C (not included)



LCD-MID-CM2 Dual Mid-Size Flat Panel Ceiling Adaptor

- Holds most 27" – 42" flat panels
- Adapts LCD-MID-C (sold separately) to accommodate two flat panels
- Maximum flat panel hole pattern – 410mm x 340mm
- Adjustable -5° to +20° tilt
- LCD-MID-C and LCD-MID-CM2 combined load capacity – 200 lbs
- Silver powder coat finish

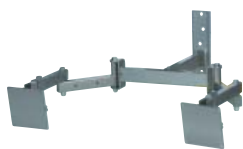
LCD-MID-CM2B Same as above except with black finish

LCD-CM2 Dual Small Flat Panel Ceiling Mount Adaptor

- Adapts LCD-IC (sold separately) to accommodate two flat panels
- Holds most 10" – 23" flat panels
- Accommodates flat panels w/ 75 or 100mm VESA standards
- Adjustable -5° to +20° tilt / Rotates 240° at flat panel
- LCD-CM2 and LCD-IC combined load capacity - 50 lbs
- Silver powder coat finish



Adaptor shown with LCD-IC (not included)



Adaptor shown with two LCD-I's (not included)

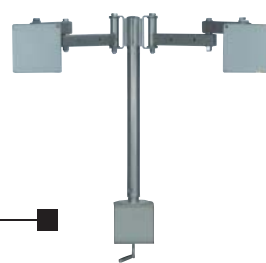


LCD-WM2 Dual Small Flat Panel Wall Mount Adaptor

- Allows attachment of two LCD-I mounts (sold separately)
- Arm extends 11" from wall
- Load capacity - 50 lbs
- Silver powder coat finish

LCD-DM2 Dual Small Flat Panel Desk Mount Adaptor

- Allows attachment of two LCD-I mounts (sold separately)
- Can be attached as a clamp-on or bolt through mount
- Mounting pole telescopes from 18" - 24"
- Load capacity - 50 lbs
- Silver powder coat finish



Adaptor shown with two LCD-I's (not included)



www.videomount.com

Flat Panel Mounts

Flat Panel Mount Adaptors



AP-1 400mm x 200mm VESA Adaptor Plate

- Adapts a VESA 200mm plate to accommodate a VESA 400mm x 200mm hole pattern
- Designed specifically to work with the LCD-2537 and LCD-2537C, but will work with any manufacturer's VESA 200mm mount
- Silver powder coat finish

AP-1B Same as above except with black finish



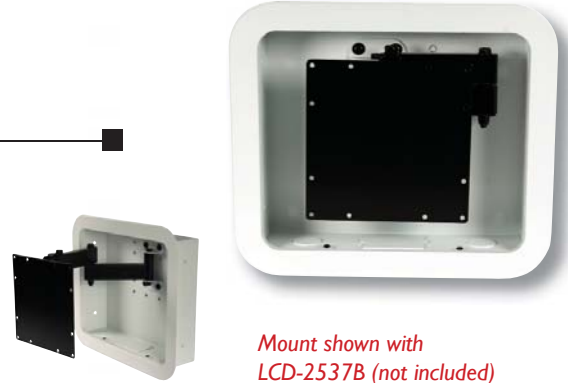
AP-2B 300mm x 300mm VESA Adaptor Plate

- Adapts a VESA 200mm plate to accommodate a VESA 300mm x 300mm hole pattern
- Designed specifically to work w/ the LCD-2537B and LCD-2537CB, but will work w/ any manufacturer's VESA 200mm mount
- Black powder coat finish

IWB-1B In Wall Box Adaptor

- Holds most 15" – 37" flat panels
- Used in conjunction with the LCD-1B or the LCD-2537B
- Fits in between two 16" on center wooden studs
- Includes paintable decorative plastic trim ring
- Integrated cable and electrical knockouts
- Flat panel collapses flush with front face
- Includes black adaptors for the LCD-1B and LCD-2537B
- Load capacity – 75 lbs

IWB-1 Same as above except with silver adaptors



Mount shown with LCD-2537B (not included)

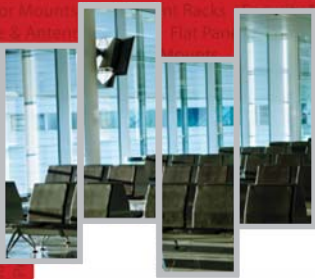


LCD-PA Pole Adaptor

- For use with LCD-1 and LCD-2537
- Adapts round or square poles to accept mount
- Stainless steel straps adjust from 4" – 10"
- Silver powder coat finish

www.videomount.com

Digital Signage Mounts & Accessories



FP-LDSB *Large Flat Panel Digital Signage Mount*

- Holds most 32" – 63" flat panels in portrait or landscape
- Maximum flat panel hole pattern – 810mm x 530mm (810mm x 810mm with extensions)
- Adjustable tilt -5° to +15° lockable at 5° increments
- Sectional wall plate which can be integrated w/ multiple FP-LDSB's to create a video wall
- Distance from wall to back of the flat panel – 2.5" (2.6" w/ rail extensions)
- Load capacity – 180 lbs
- Black powder coat finish

DS-CH *Digital Signage Computer Holder*

- Used to attach a digital signage computer to a wall or ceiling mount
- Attaches to mounting rails in landscape or portrait positions to better hide behind the flat panel
- Utilizes tamper resistant hardware
- Works with VMP models FP-LDSB, PDS-LC and PDS-LFT as well as most other manufacturer's mounts
- Box dimensions – 11" x 7" x 2.375"
- Black powder coat finish



DS-BP *Digital Signage Mount Wall Plate Extension*

- Used w/ the FP-LDSB to extend the wall plate 12" to add additional flat panels
- Black powder coat finish

www.videomount.com

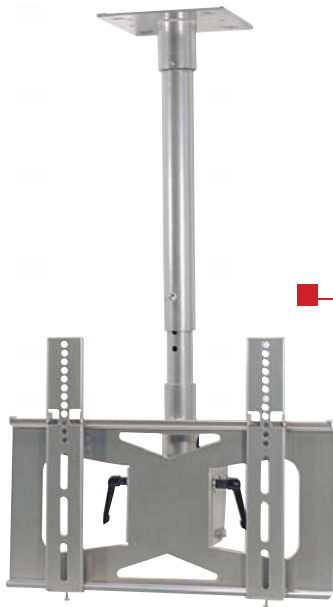
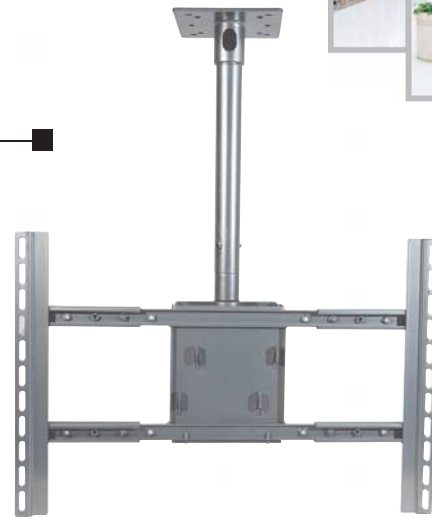
Digital Signage Mounts & Accessories



PDS-LC Large Flat Panel Ceiling Mount

- Holds most 37" - 63" flat panels
- Maximum flat panel hole pattern – 860mm x 500mm
- Mast telescopes 23" – 35" from ceiling
- Rotates 360° / Adjustable 0° – 15° tilt
- Cable management through the center of the mast
- Load capacity - 180 lbs / Silver powder coat finish

PDS-LCB Same as above except with black finish



LCD-MID-C Mid-Size Flat Panel Ceiling Mount

- Holds most 27" – 42" flat panels
- Mast telescopes 23" – 35" from ceiling
- Maximum flat panel hole pattern – 410mm x 340mm
- Rotates 360° / Adjustable -5° to +20° tilt
- Cable management through the center of the mast
- Load capacity – 100 lbs / Silver powder coat finish

LCD-MID-CB Same as above except with black finish

LCD-MID-CM2 Dual Mid-Size Flat Panel Ceiling Mount Adaptor

- Holds most 27" – 42" flat panels
- Adapts LCD-MID-C (sold separately) to accommodate two flat panels
- Maximum flat panel hole pattern – 410mm x 340mm
- Adjustable -5° to +20° tilt
- LCD-MID-C and LCD-MID-CM2 combined load capacity – 200 lbs
- Silver powder coat finish

LCD-MID-CM2B Same as above except with black finish



Adaptor shown with one LCD-MID-C (not included)

www.videomount.com

Projector Mounts



PM-LP Yokeless Low Profile Projector Mount

- Low 2.625" mounting profile (measurement includes the mounting feet)
- Adjustable tilt - $\pm 20^\circ$ / Adjustable pitch - $\pm 15^\circ$
- Adjustable yaw (rotation) - $\pm 180^\circ$ (360°)
- Fits most projectors w/ mounting holes inside 14.5" diameter
- 1.5" NPT mast telescopes 23" – 35" from ceiling
- Flush mount plate included
- Cable management through the center of the mast
- Mounting screws (projector to mount) included
- Load capacity - 75 lbs
- Silver powder coat finish

PM-LPB Same as above except with black finish

PM-3 Yokeless Projector Mount

- Adjustable tilt - $\pm 20^\circ$ / Adjustable pitch - $\pm 15^\circ$
- Adjustable yaw (rotation) - $\pm 180^\circ$ (360°)
- Fits most projectors with mounting holes inside 14.5" diameter
- Mast telescopes 18" – 30" from ceiling
- Flush mount plate included
- Mounting screws (projector to mount) included
- Load capacity - 75 lbs
- Silver powder coat finish

PM-3B Same as above except with black finish



PM-2 Small Clamping Projector Mount

- Adjustable tilt - 0° to 10° / Adjustable yaw (rotation) - 360°
- Opens from 7" to 13" (left to right)
- Opens from 3" to 5.75" (top to bottom)
- Eight-point clamping mechanism adjusts 6.5" to 10" front to back
- Mast telescopes 18" – 30" from ceiling
- Flush mount plate included
- Load capacity - 75 lbs
- Black powder coat finish



www.videomount.com



PM-I Large Clamping Projector Mount

- Adjustable tilt - 0° to 10° / Adjustable yaw (rotation) - 360°
- Opens from 10" to 24" (left to right)
- Opens from 4.5" to 7.75" (top to bottom)
- Eight-point clamping mechanism adjusts 8" to 11.75" front to back
- Mast telescopes 18" – 30" from ceiling
- Integrated flush mount plate included
- Load capacity - 75 lbs
- Black powder coat finish



Projector and mount
not included



PMC-S Small Projector Enclosure

- Inner dimensions - 16"W x 16"D x 10"H
- Lift off lid for installation
- Easy access hinge for maintenance
- Utilizes tamper resistant screws
- Adjustable front security bars for lens placement
- Accommodates PM-2, PM-3 and PM-LP
- Black powder coat finish

PMC-L Large Projector Enclosure

- Inner dimensions - 24"W x 20"D x 13"H
- Lift off lid for installation
- Easy access hinge for maintenance
- Utilizes tamper resistant screws
- Adjustable front security bars for lens placement
- Accommodates PM-I, PM-3 and PM-LP
- Black powder coat finish



www.videomount.com

Equipment Racks & Accessories

Racks



ER-I 19" Headend Equipment Rack – 71" Height

- Rail height – 71" / 40 rack spaces
- EIA compliant
- Standard 10-32 threading
- Includes 32 rack screws
- Steel construction
- Load capacity – 400 lbs evenly distributed
- Black static resistant powder coat finish

ER-I-4PKIT 2 Post Expansion Kit For ER-I

- Converts ER-I from 2 post to 4 post rack
- Includes side stabilizing bars
- Steel construction
- Black static resistant powder coat finish

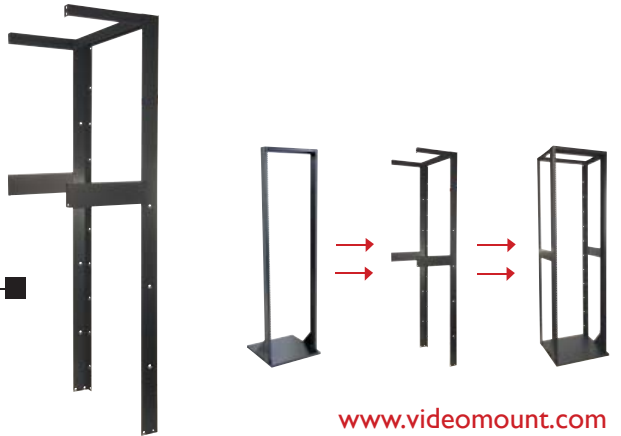


ER-184 19" Headend Equipment Rack – 84" Height

- Rail height – 84" / 45 rack spaces
- EIA compliant
- Standard 10-32 threading
- Includes 32 rack screws
- Steel construction
- Load capacity – 400 lbs evenly distributed
- Black static resistant powder coat finish

ER-184-4PKIT 2 Post Expansion Kit For ER-184

- Converts ER-184 from 2 post to 4 post rack
- Includes side stabilizing bars
- Steel construction
- Black static resistant powder coat finish



www.videomount.com

Equipment Racks & Accessories

Racks



ER-148 19" Headend Equipment Rack – 48" Height

- Rail height – 48" / 27 rack spaces
- EIA compliant
- Standard 10-32 threading
- Includes 32 rack screws
- Steel construction
- Load capacity – 400 lbs evenly distributed
- Black static resistant powder coat finish



ER-72 72" Aluminum Open Frame 19" Rack

- 38 rack spaces / EIA compliant
- Aluminum construction / Self squaring design
- Standard 10 – 32 threading
- Includes 32 rack screws
- Load capacity – 750 lbs evenly distributed
- Black powder coat finish

ER-84 84" Aluminum Open Frame 19" Rack

- 45 rack spaces / EIA compliant
- Aluminum construction / Self squaring design
- Standard 10 – 32 threading
- Includes 32 rack screws
- Load capacity – 750 lbs evenly distributed
- Black powder coat finish



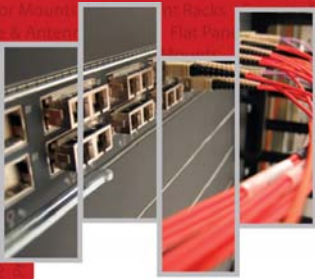
ER-W24 Swing Gate Wall Rack – 24" Height

- Rail height – 24" / 13 rack spaces/ Usable depth - 19"
- EIA compliant / Opens from either the left or the right side
- Fixed wall plate allows easy installation and removal of populated rack / Innovative lift on/off design
- Standard 10-32 threading / Steel and aluminum construction
- Load capacity – 100 lbs evenly distributed
- Black static resistant powder coat finish

www.videomount.com

Equipment Racks & Accessories

Shelves



ER-SI *Economy Rack Shelf*

- Fits components up to 17" wide
- Two space racking height (2.6")
- 12.5" tray depth
- Load capacity – 40 lbs
- Includes 10-32 and 12-24 mounting screws
- Black powder coat finish

ER-SIV *Vented Economy Rack Shelf*

- Fits components up to 17" wide
- Two space racking height (2.6")
- 12.5" tray depth
- Load capacity – 40 lbs
- Includes 10-32 and 12-24 mounting screws
- Black powder coat finish



ER-S2U *Two Space Rack Shelf*

- Fits components up to 17.375" wide
- Two space racking height (3.5")
- Tray depth – 14.75"
- Load capacity – 50 lbs
- Includes 10-32 and 12-24 mounting screws
- Black static resistant powder coat finish

ER-S2UV *Vented Two Space Rack Shelf*

- Fits components up to 17.375" wide
- Two space racking height (3.5")
- Tray depth – 14.75"
- Load capacity – 50 lbs
- Includes 10-32 and 12-24 mounting screws
- Black static resistant powder coat finish



www.videomount.com

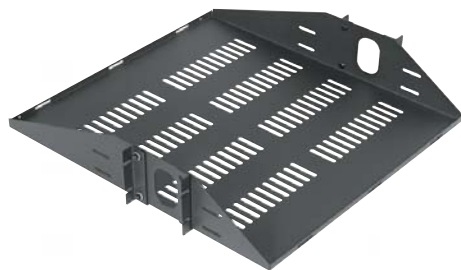


ER-8RSA Adjustable Eight Receiver Rack Shelf

- Accommodates up to eight receivers
- Adjusts left to right and front to back
- Includes front and top anti-roll bars
- Load capacity – 50 lbs
- Includes 10-32 and 12-24 mounting screws
- Black powder coat finish

The ER-8RSA comes with additional components including front and top anti-roll bars along with additional receiver separators (shown)

** Patent Pending*



ER-S2CM Vented Two Space Center Mount Rack Shelf

- Fits components up to 17.375" wide
- Two space racking height (3.5")
- Tray depth – 19"
- Load capacity – 50 lbs
- Includes 10-32 and 12-24 mounting screws
- Black static resistant powder coat finish

ER-SKS2U Rack Mounted Sliding Keyboard Shelf

- Retracts flush when not in use
- Rounded edge MDF
- Extends 14" for full keyboard access
- Tray dimensions - 17" W x 11" D x 2" - Rack Spaces H
- Load capacity – 35 lbs
- Includes 10-32 and 12-24 rack screws
- Black powder coat finish



www.videomount.com

Equipment Racks & Accessories

Accessories

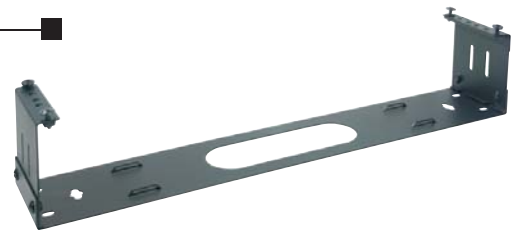


ER-HWB1 *Hinged Wall Bracket – 1 Space*

- Provides easy access to the back of panels
- Right or left hand opening / 4" depth
- Includes 10-32 and 12-24 mounting screws
- Black powder coat finish

ER-HWB2 *Hinged Wall Bracket – 2 Space*

- Provides easy access to the back of panels
- Right or left hand opening / 4" depth
- Includes 10-32 and 12-24 mounting screws
- Black powder coat finish



ER-DRCM1 *D-Ring Cable Manager – 1 Space*

- Large slotted metal rings manage all types and sizes of wire and cable / Easy to install on equipment racks
- Includes 10-32 and 12-24 mounting screws
- Black powder coat finish

ER-DRCM2 *D-Ring Cable Manager – 2 Space*

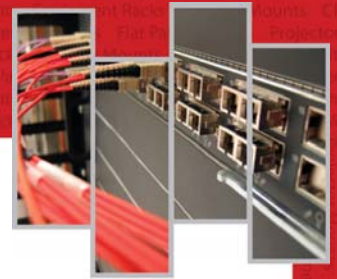
- Large slotted metal rings manage all types and sizes of wire and cable / Easy to install on equipment racks
- Includes 10-32 and 12-24 mounting screws
- Black powder coat finish



ER-CASTERS *Rack Casters*

- Four heavy duty casters that attach to the ER-1, ER-148 or ER-184 / Hole pattern – 2.375" x 3.375"
- Hardware to attach casters to rack included
- Maximum weight capacity of rack with casters – 400 lbs

www.videomount.com



ER-LCDI017 LCD Monitor Rack Mount

- Holds most monitors 10" – 17" or can be inverted to hold monitors up to 23" / Recesses monitor into rack
- Accommodates monitors with 75mm and 100mm VESA standards / 9 space racking height
- Includes 10-32 and 12-24 rack screws
- Load capacity - 50 lbs
- Black static resistant powder coat finish



VMP-VWS Vented Wall Shelf

- Internal dimensions - 20.5" W x 17" D x 17" H
- Wall or backboard mount / Convenient quick-slide assembly
- Five cable supply locations
- Load capacity - 200 lbs
- Black static resistant powder coat finish

ER-RS1032-50 Rack Screws

- 50 screws
- 0.75" long with 10 – 32 threads
- Classic Phillips trim head / Includes nylon washers
- Heat treated to resist stripping

ER-RS1032-100 Same as above in 100 pack



ER-1B Single Space Blank Panel (1.75")

- Tempered 16 gauge steel
- Black static resistant powder coat finish

ER-2B Two space rack filler (3.5")

ER-4B Four space rack filler (7")

ER-8B Eight space rack filler (14") - (Not Shown)

www.videomount.com

Security Mounts



Camera not included



LCD-PV *PublicView LCD Monitor Mount Kit*

Kit Includes:

LCD-2537CB *Mid-Size Flat Panel Ceiling Mount*

- Holds most 10" – 37" LCD monitors
- Modified with two mounting points for camera bracket
- Rotates 360° / Adjustable tilt -5° to +20°
- Mast telescopes from 18" – 30" from ceiling
- Load capacity - 75 lbs / Black powder coat finish

AK-I & CP-I *Adaptor Kit & Ceiling Plate*

- Used together, these units allow ceiling to mount extension drop distances of almost any length using standard 1.5" NPT pipe

Universal Camera Bracket

- Can be assembled into several different configurations uses industry standard 1/4" – 20 UNC threading

VMP-046/048 *Large CCTV Monitor Ceiling/Wall Mount*

- Holds most 13" - 20" monitors
- Rotates 260° degrees (wall) / 360° degrees (ceiling)
- Adjustable 0° to 30° degree tilt
- Ceiling mount: mast telescopes from 17" – 27" from ceiling
- Wall mount: maximum monitor depth 21"
- Opens from 12.5" - 19.75" (left to right)
- Opens from 17.25" - 19.75" (top to bottom)
- Load capacity - 75 lbs
- Black powder coat finish



DVR-LB I *DVR Lockbox With Fan*

- Interior dimensions 21" W x 21" D x 8" H
- Vented and includes fan for additional ventilation
- Interlocking lift off lid
- Key locked hinged front door
- Black static resistant powder coat finish

www.videomount.com

Security Mounts



DVR-LB2 *DVR Lockbox With Smoked Plexiglas® Window*

- Interior dimensions 21" W x 21" D x 8" H
- Window dimensions are 18" W x 3" H
- Window will pass IR signals
- Vented and includes fan for additional ventilation
- Interlocking lift off lid / Key locked hinged front door
- Black static resistant powder coat finish



DVR-WA *DVR Lockbox Wall Mounting Arms*



- Designed to mount to 16" on center studs
- Works with the DVR-LB1 and DVR-LB2
- Load capacity – 50 lbs
- Black static resistant powder coat finish

PMC-S *Small Projector Enclosure*

- Inner dimensions - 16" W x 16" D x 10" H
- Lift off lid for installation
- Easy access hinge for maintenance
- Utilizes tamper resistant screws
- Adjustable front security bars for lens placement
- Accommodates PM-2, PM-3 and PM-LP
- Black powder coat finish



Projector and mount not included



PMC-L *Large Projector Enclosure*

- Inner dimensions - 24" W x 20" D x 13" H
- Lift off lid for installation
- Easy access hinge for maintenance
- Utilizes tamper resistant screws
- Adjustable front security bars for lens placement
- Accommodates PM-1, PM-3 and PM-LP
- Black powder coat finish

www.videomount.com

Mounting Accessories



VH-003 Wall Mount Electronic Component Holder

- Can be used for holding a single device or “stacked” for multiple components
- Accommodates DVD players, CD players, DVRs, HD receivers and VCRs
- Mounting ring extends 12” from the wall
- Can be used in conjunction with any TV wall mount to design an entertainment center
- Load capacity – 25 lbs / Black powder coat finish

VH-003S Same as above except silver finish

VH-001 DVD/VHS/Satellite Receiver Holder

- Holds most DVD players, VCRs, satellite receivers and DVRs
- Opens 10.4” to 17.125” (left to right)
- Opens 1.83” to 5.25” (top to bottom)
- Overall height is 5.875” (inside to inside)
- Black powder coat finish

VH-001S Same as above except silver finish



Adaptor shown with LCD-IC and VH-001S (mounts not included)

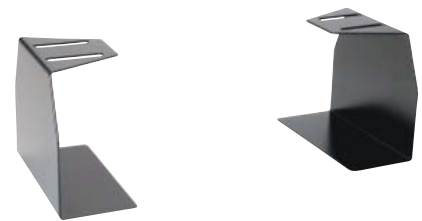
VH-004 Flat Panel Ceiling Mount Adaptor For VH-001

- Allows VH-001 to be hung below VMP’s flat panel ceiling mounts
- Drop adjustment of 6” to 17”
- Silver powder coat finish

VH-004B Same as above except black finish

VH-002 Add On Holder For VH-001

- Allows a second device (DVD player, VCR, satellite receiver, digital cable box) to be attached to the VH-001
- Black powder coat finish



www.videomount.com

Mounting Accessories



VH-005 Pipe/Ceiling Mast Electronic Component Holder

- Works w/ all VMP ceiling mounts and works with all manufacturer's ceiling mounts using masting from 1" to 2" O.D.
- Accommodates DVD players, CD players, DVR's, HD receivers, VCR's, and other electronic components
- Mounting "U" tray extends 13" from the pipe
- Includes decorative plastic covers
- Load capacity – 25 lbs / Silver powder coat finish

VH-005B Same as above except black finish



Pipe not included

SCM-I Suspended Ceiling Mount



- For use with 2' x 2' or 2' x 4' ceiling tiles
- Can be used with standard 1.5" NPT pipe or VMP ceiling masts and includes 20 feet of tie wire
- Four integrated standard electrical KO's
- Load capacity - 75lbs
- White powder coat finish

SCFR-I Suspended Ceiling Finishing Ring Kit

- Finishing ring to clamp around 1.5" NPT pipe
- Includes an adaptor for VMP ceiling masts that are not 1.5" NPT pipe
- Chrome finish



CP-I Ceiling Plate For Standard 1.5" NPT Pipe

- Universal ceiling flange works with all manufacturer's mounting systems when using standard 1.5" NPT pipe
- Provides base for ceiling installations
- Black powder coat finish

CP-2 Same as above except for use w/ 1" NPT pipe

www.videomount.com

Mounting Accessories



CP-IPT Ceiling Plate For Standard 1.5" NPT Pipe With Cable Pass-Through



- Universal ceiling flange works with all manufacturer's mounting systems when using standard 1.5" NPT pipe
- Cable pass-through for easy cable management
- Provides base for ceiling installations
- Black powder coat finish

AK-I Adaptor Kit To Convert To 1.5" NPT Pipe

- Adaptor Kit for VMP014/024, VMP036/038, PM Series and LCD-2537C to be used with standard 1.5" NPT pipe
- Black powder coat finish

AK-2 Adaptor Kit for VMP042/044, VMP046/048, and LCD-1C to be used with standard 1" NPT pipe



AK-IPT Adaptor Kit with Cable Pass-Through



- Adaptor Kit for VMP014/024, VMP036/038, PM Series, VMP042/044, VMP046/048, LCD-1C and LCD-2537C to be used with standard 1.5" NPT pipe
- Cable pass-through allows cable management through center of masting

EXT-1830 1.5" NPT Telescoping Extension – 18" to 30"

- Works with VMP ceiling mounts that use or have been adapted to use 1.5" NPT pipe
- Work with any manufacturers' ceiling mounts which use 1.5" NPT pipe
- Adjustable from 18" to 30" / Black powder coat finish

EXT-4872 Same as above except adjustable from 48" to 72" in length



www.videomount.com

Mounting Accessories



EXT-A Extension Pipe

- Acts as an inline splice to extend drop length of VMP014/024, LCD-2537C and PM Series (except PM-LP) by up to 28" (can be cut to length)
- 31" tempered steel mast
- Black powder coat finish

EXT-B Same as above except works with VMP042/044, VMP046/048 and LCD-1C



CCA-I Cathedral Ceiling Adaptor

- Designed for angled ceiling installations and works with all manufacturer's mounting systems when using standard 1.5" NPT pipe
- Also works with ceiling mast provided with VMP014/024, VMP036/038, PM Series, LCD-2537C and PDS-LC
- Black powder coat finish

IBA-I I-Beam Adaptor

- Designed to adapt ceiling mounts to clamp to an I-Beam
- Works with all VMP ceiling masts directly
- Will also work with all manufacturer's mounting systems when using 1.5" NPT pipe
- Accommodates 2.25" to 12" flange widths
- Accommodates maximum flange height of 1"
- Black powder coat finish



UA-I Unistrut® Adaptor

- Adapts ceiling mounts to work w/ Unistrut® up to 1.625"
- Works w/ ceiling masts provided with the VMP014/024, VMP036/038, PM Series, LCD-2537C and PDS-LC
- Will also work w/ all manufacturer's mounting systems when using 1.5" NPT pipe
- Black powder coat finish

www.videomount.com

Mounting Accessories



AP-I 400mm x 200mm VESA Adaptor Plate



- Adapts a VESA 200mm x 200mm plate to accommodate a VESA 400mm x 200mm hole pattern
- Designed specifically to work with the LCD-2537 and LCD-2537C, but will work with any manufacturer's VESA 200mm x 200mm mount
- Silver powder coat finish

AP-IB Same as above except with black finish

AP-2B 300mm x 300mm VESA Adaptor Plate

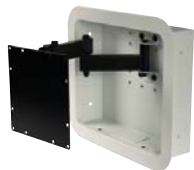
- Adapts a VESA 200mm x 200mm plate to accommodate a VESA 300mm x 300mm hole pattern
- Designed specifically to work with the LCD-2537 and LCD-2537C, but will work with any manufacturer's VESA 200mm x 200mm mount
- Black powder coat finish



IWB-IB In Wall Box Adaptor



Mount shown with
LCD-2537B (not included)



- Holds most 15"– 37" flat panels
- Used in conjunction with the LCD-1B or the LCD-2537B
- Fits in between two 16" on center wooden studs
- Includes paintable decorative plastic trim ring
- Integrated cable and electrical knockouts
- Flat panel collapses flush with front face
- Includes black adaptors for the LCD-1B and LCD-2537B
- Load capacity – 75 lbs

IWB-I Same as above except with silver adaptors

www.videomount.com

Mounting Accessories



LCD-PA Pole Adaptor

- For use with LCD-I and LCD-2537
- Adapts round or square poles to accept mount
- Stainless steel straps adjust from 4" – 10"
- Silver powder coat finish

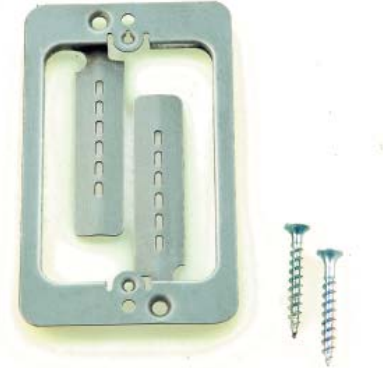


UP-I Universal Mounting Plate

- 12" and 16" centers with threaded hole patterns for VMP-006, VMP014/024, VMP036/038 (ceiling only), VMP046/048 (wall only), and PDS-LC allows for 2 stud/joist span to distribute mounting system and equipment weight evenly
- Black powder coat finish

LVMP-I Low Voltage Mounting Plate

- Does away with the need for an electrical junction box
- Perfect for low voltage class 2 wiring
- Mounts any standard low voltage device
- Works with 1/2" – 1 1/4" walls
- Installs with a screwdriver and a drywall saw
- Mounting screws included



VMP-STRAP Safety/Security Strap

- 1" width by 10' length
- Sturdy woven nylon blend construction
- Saw tooth cinching buckle
- Black, white or silver (specify color)

www.videomount.com

Satellite & Antenna Mounts & Accessories



FRM Series *Non-Penetrating Roof Mounts*

- Non-penetrating roof mounts are constructed of steel and use standard concrete blocks to anchor. For use with DBS, off-air antenna and satellite internet systems.

FRM-125 60" mast with 1.25" O.D.

FRM-166 30" mast with 1.66" O.D.

FRM-200 30" mast with 2" O.D.

FRM-MAT Rubber Mat

FRMA *Adaptor For FRM Mounts*

- Adapts FRM-200 mount (2" OD masting) to 2.375" OD masting
- Dark gray weather resistant powder coat finish



Satellite dish not included



PRM-2 *Non-Penetrating Pitched Roof Mount*

- Accommodates 18" and 24" DBS/DSS antennas
- Holds up to eleven 8" x 8" x 16" standard concrete blocks for ballast or comes w/ pitch pad kit
- Adjustable dish mounting plate
- Heavy duty steel construction
- Dark gray weather resistant powder coat finish

TR Series *Heavy Duty Tripods*

- Tripods hold masts up to 1.75" OD
- Includes a pitch pad kit, a universal mast clamp and has installer friendly front facing feet

TR-36 36" heavy duty tripod

TR-60 60" heavy duty tripod



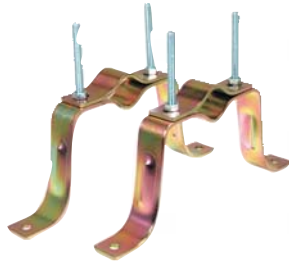
www.videomount.com

Satellite & Antenna Mounts & Accessories



WB-6 6" Wall Mount

- "U" bolt mast holder with 6" clearance
- Accommodates 1.25" to 1.66" antenna or DBS pipe
- Sold in pairs

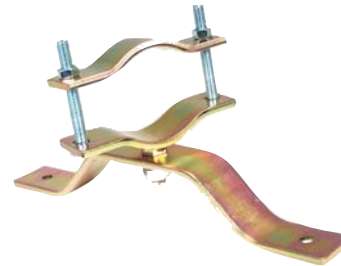


BR-4XD Heavy Duty 4" Wall Mount

- Accommodates 1" to 2.25" antenna or DBS pipe
- 3" clearance
- Sold in pairs

GU-3 Swivel Bracket

- Wall bracket mounts antenna or DBS pipe 3" off wall
- Accommodates 1.25" to 3" antenna or DBS pipe



Y-MOUNT Heavy Duty "Y" Type Chimney Mount

- Accommodates 1.25" to 1.66" antenna or DBS pipe
- Includes 0.75" by 18' anodized steel straps
- Sold in pairs

Z-MOUNT "Z" Type Chimney Mount

- Accommodates 1.25" to 1.66" antenna or DBS pipe
- Includes 0.75" by 18' anodized steel straps
- Sold in pairs



GEM-4060 Adjustable Gable End Antenna Mount

- Mounting bracket adjusts from 40" to 60" (left to right)
- Holds up to a 1.5" antenna mast



www.videomount.com

Satellite & Antenna Mounts & Accessories

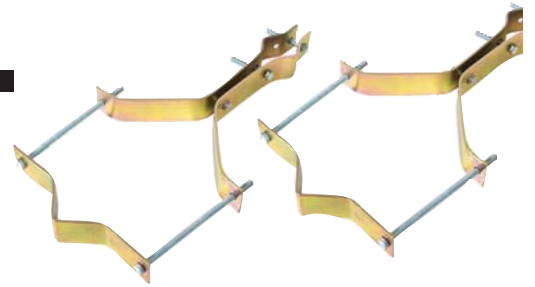


GEM-I DBS Gable Mount

- Accommodates the mounting of a DBS dish on a gable end or eve
- Adjustable - $\pm 45^\circ$

P-6 Vent Pipe Mount

- Mounting attachment for vent pipes 2.75" to 5" O.D.
- Accommodates 1" to 2" antenna or DBS pipe
- Sold in pairs



SM-I DBS Siding Mount

- Accommodates the mounting of a DBS dish on house siding
- Creates a flat mounting platform for the DBS foot plate by nesting against the siding
- Constructed of heavy duty "DBS gray" plastic

ER-I 19" Headend Equipment Rack – 71" Height

- Rail height – 71" / 40 rack spaces
- EIA compliant
- Standard 10-32 threading
- Includes 32 rack screws
- Steel construction
- Load capacity – 400 lbs evenly distributed
- Black static resistant powder coat finish



www.videomount.com



ER-SI *Economy Rack Shelf*

- Fits components up to 17" wide
- 2 space racking height (2.6")
- 12.5" tray depth
- Load capacity – 40 lbs
- Includes 10-32 and 12-24 mounting screws
- Black powder coat finish



ER-SIV *Vented Economy Rack Shelf*

- Fits components up to 17" wide
- 2 space racking height (2.6")
- 12.5" tray depth
- Load capacity – 40 lbs
- Includes 10-32 and 12-24 mounting screws
- Black powder coat finish



ER-8RSA *Adjustable Eight Receiver Rack Shelf*

- Accommodates up to eight receivers
- Adjusts left to right and front to back
- Includes front and top anti-roll bars
- Load capacity – 50 lbs
- Includes 10-32 and 12-24 mounting screws
- Black powder coat finish

The ER-8RSA comes with additional components including front and top anti-roll bars along with additional receiver separators (shown)

** Patent Pending*



www.videomount.com

CRT Mounts



VMP 014/024 Large Television Wall/Ceiling Mount

- Holds most 20" to 29" CRTs
- Rotates 260° (wall) / 360° (ceiling)
- Adjustable 0° - 15° tilt
- Ceiling mount: mast telescopes from 18" – 30" from ceiling
- Wall mount: maximum monitor depth 23"
- Opens from 17" - 32" (left to right)
- Opens from 15.75" - 26.25" (top to bottom)
- Load capacity - 165 lbs
- Black powder coat finish



VMP-001B Single Arm Television Wall Mount

- Holds most 10" to 17" CRTs
- Rotates 160° at wall and 240° at tray
- Has adjustable 0° - 15° tilt
- Includes safety/security strap
- Tray opens 12"-17"
- Depth (arm fully extended) – 19"
- Load capacity - 60 lbs
- Black powder coat finish

VMP-001W Same as above except with white finish



VMP-003B Double Arm Television Wall Mount

- Holds most 10" to 17" CRTs
- Rotates 160° at wall, 240° at elbow and 240° at tray
- Has adjustable 0° - 15° tilt
- Includes safety/security strap
- Tray opens 12"-17"
- Depth (arm fully extended) – 28.75"
- Load capacity - 60 lbs
- Black powder coat finish

VMP-003W Same as above except with white finish



www.videomount.com



W-13B Small Television Wall Mount

- Holds most 9" to 13" CRTs
- Rotates 140° at wall and 240° at base
- Adjustable 0° to 10° tilt
- Includes safety/security strap
- Tray: width – 15" / depth – 11"
- Load capacity – 60 lbs
- Black powder coat finish

W-13S Same as above except with silver finish



W-20B Medium Television Wall Mount

- Holds most 19" to 21" CRTs
- Rotates 140° at wall
- Adjustable 0° to 10° tilt
- Includes safety/security strap
- Tray: width – 19.75" / depth – 12.75"
- Load capacity – 75 lbs
- Black powder coat finish

W-20W Same as above except with white finish



W-27B Large Television Wall Mount

- Holds most 25" to 27" CRTs
- Rotates 140° at wall
- Adjustable 0° to 10° tilt
- Includes safety/security strap
- Tray: width – 24" / depth – 13.75"
- Load capacity – 125 lbs
- Black powder coat finish



www.videomount.com

DLP Mounts & Turntables



DLP-2 *DLP Television Wall Mount*

- Unique 3 bracket system provides under and/or over mounting
- Works with most DLP TVs
- Adjusts from 14" – 20" front to back
- Includes anti-skid pads
- Low profile hideaway design
- Load capacity – 125 lbs
- Black powder coat finish

TT-13 *Small Television/Flat Panel Turntable*

- Platform width 15" / depth 12"
- Load capacity – 60 lbs



TT-20 *Medium Television/Flat Panel Turntable*

- Platform width 20" / depth 15"
- Load capacity – 75 lbs



TT-27 *Large Television/Flat Panel Turntable*

- Platform width 26" / depth 16"
- Load capacity – 125 lbs



TT-32 *Mega Television/Flat Panel Turntable*

- Platform width 32" / depth 18"
- Load capacity – 200 lbs

TT-LCD20B *Flat Panel Turntable*

- Platform width 20" / depth 14"
- Load capacity – 75 lbs
- Black finish

TT-LCD20S *Same as above except with silver finish*



www.videomount.com

Speaker Mounts



SP-200W Multi-Configurable Speaker Mount

- Virtually limitless number of configurations for the wall or ceiling
- Full range of tilt, twist and swivel
- Mounts on back of speaker
- Load capacity - 12 lbs
- High impact plastic / White finish / Sold in pairs

SP-200B Same as above except with black finish



SP-001 Speaker Wall/Ceiling Mount

- Swivels 180° / Twists 180°
- Load capacity – 10 lbs
- Black powder coat finish / Sold in pairs

SP-007 Speaker Wall Mount

- Swivels 180°
- Plate size 6" x 6"
- Load capacity – 12 lbs
- Black powder coat finish / Sold in pairs



SP-010 Adjustable Speaker Wall Mount

- Adjusts to fit 7" to 12" depth speakers
- Swivels 135° / Adjustable tilt 0° to 20°
- Load capacity – 20 lbs
- Black powder coat finish / Sold in pairs

SP-013 Speaker Wall Mount

- Swivels 135°
- Adjustable tilt 0° to 20°
- Plate size – 6" x 6"
- Load capacity – 10 lbs
- Black powder coat finish / Sold in pairs



www.videomount.com

Index



A

AK-1 26

AK-2 26

AK-IPT 26

AP-1 11, 28

AP-1B 11, 28

AP-2B 11, 28

B

BR-4XD 31

C

CCA-1 27

CP-1 25

CP-2 25

CP-IPT 26

D

DLP-2 36

DS-BP 12

DS-CH 12

DVR-LBI 22

DVR-LB2 23

DVR-WA 23

E

ER-1 16, 32

ER-148 17

ER-1-4PKIT 16

ER-184 16

ER-184-4PKIT 16

ER-1B 21

ER-2B 21

ER-4B 21

ER-8B 21

ER-72 17

ER-84 17

ER-8RSA 19, 33

ER-CASTERS 20

ER-DRCM1 20

ER-DRCM2 20

ER-HWB1 20

ER-HWB2 20

ER-LCD1017 9, 21

ER-RS1032-50 21

ER-RS1032-100 21

ER-S1 18, 33

ER-S1V 18, 33

ER-S2CM 19

ER-S2U 18

ER-S2UV 18

E (cont'd)

ER-SKS2U 19

ER-W24 17

EXT-1830 26

EXT-4872 26

EXT-A 27

EXT-B 27

F

FP-LDSB 6, 12

FP-LF 4

FP-LFB 4

FP-LFV 4

FP-LFVB 4

FP-MF 5

FP-MFB 5

FP-SFB 5

FP-SFT 6

FP-SFTB 6

FP-XMF 4

FP-XMFB 4

FRMA 30

FRM-MAT 30

FRM-Series 30

FRM-125 30

FRM-166 30

FRM-200 30

G

GEM-1 32

GEM-4060 31

GU-3 31

I

IBA-1 27

IWB-1 11, 28

IWB-1B 11, 28

L

LCD-1 7

LCD-1B 7

LCD-1C 8

LCD-1CB 8

LCD-1CW 8

LCD-2 9

LCD-2B 9

LCD-2537 7

LCD-2537B 7

LCD-2537C 8

LCD-2537CB 8

LCD-CM2 10

L (cont'd)

LCD-DM2 10

LCD-MID-C 8, 13

LCD-MID-CB 8, 13

LCD-MID-CM2 10, 13

LCD-MID-CM2B 10, 13

LCD-MID-F 5

LCD-MID-FB 5

LCD-MID-FT 6

LCD-MID-FTB 6

LCD-PA 11, 29

LCD-PV 22

LCD-UCI 9

LCD-WM2 10

LVMP-1 29

P

P-6 32

PDS-LC 8, 13

PDS-LCB 8, 13

PDS-LFT 6

PDS-LFTB 6

PDS-LWA 7

PDS-LWAB 7

PM-1 15

PM-2 14

PM-3 14

PM-3B 14

PMC-L 15, 23

PMC-S 15, 23

PM-LP 14

PM-LPB 14

PRM-2 30

S

SCFR-1 25

SCM-1 25

SM-1 32

SP-001 37

SP-007 37

SP-010 37

SP-013 37

SP-200W 37

SP-200B 37

T

TR-Series 30

TR-36 30

TR-60 30

TT-13 36

TT-20 36

T (cont'd)

TT-27 36

TT-32 36

TT-LCD20B 9, 36

TT-LCD20S 9, 36

U

UA-1 27

UP-1 29

V

VH-001 24

VH-001S 24

VH-002 24

VH-003 24

VH-003S 24

VH-004 24

VH-004B 24

VH-005 25

VH-005B 25

VMP-001B 34

VMP-001W 34

VMP-003B 34

VMP-003W 34

VMP014/024 34

VMP-046/048 22

VMP-STRAP 29

VMP-VWS 21

W

W-13B 35

W-13S 35

W-20B 35

W-20W 35

W-27B 35

WB-6 31

Y

Y-MOUNT 31

Z

Z-MOUNT 31

www.videomount.com

Video Mount Products **Mounting Systems For Video, Audio & Security...Nothing Holds Up Better!**



Video Mount Products

345 Log Canoe Circle Stevensville, MD 21666

Toll Free 877.281.2169 Telephone 410.643.6390 Facsimile 410.643.6615

www.videomount.com