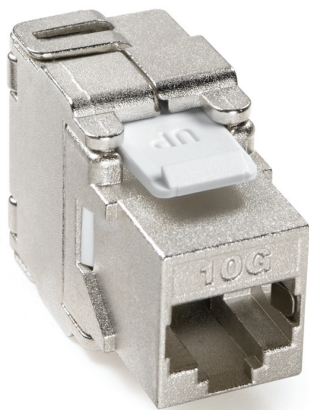


CAT 6A / 10G Shielded Connector

APPLICATION

Leviton CAT 6A Shielded Connectors meet all TIA/EIA Cat 6A and ISO/IEC 11801 Class E_a performance requirements for internal and Alien Crosstalk parameters up to 500 MHz. The connector provides superior Alien Crosstalk suppression and protects critical data from EMI (electromagnetic interference) and RFI (radio frequency interference). This makes it part of a complete CAT 6A shielded system ideal for use in healthcare, manufacturing, casinos and other environments where EMI/RFI may be a concern. Leviton's Shielded Solution is Rockwell Automation Encompass™ Approved.



SPECIFICATION

CAT 6A shielded connector shall provide electrical TIA/EIA-568.2-10 (Augmented Cat 6) performance for all internal and alien crosstalk parameters up to 500 MHz. The connector shall be encased in a die-cast housing with a wide angle, hinged design that allows easy access for termination. The connector shall allow termination without a 110 punch down tool. The connector shall include T568A and T568B universal color codes.

FEATURES

- Mitigates Alien Crosstalk with industry standard density
- Shielding provides EMI/RFI protection and data security
- Connector features robust die-cast housing
- Unique design requires no punch-down tool
- Connector incorporates a wide angle, hinged design for easy access / termination
- Rockwell Encompass™ approved

DESIGN CONSIDERATIONS

- Can be used to terminate all types of shielded cable
- Use flush cut trimmers to remove exposed conductors prior to termination
- In a QuickPort® wallplate, connectors should be mounted horizontally (side-by-side)
- When installed vertically in a QuickPort wallplate, product dimensions necessitate a blank space between connectors
- Utilize tie wrap (included) to ensure contact between drain wire and shield to connector

STANDARDS COMPLIANCE

Connector is part of a complete Cat 6A shielded solution that meets all

- TIA/EIA 568-B.2-10 Cat 6A
- ISO/IEC 11801 Class E_a
- IEEE 802.3an 10GBASE-T
- FCC Part 68
- Intertek (ETL) 3rd party verification

PHYSICAL SPECIFICATIONS

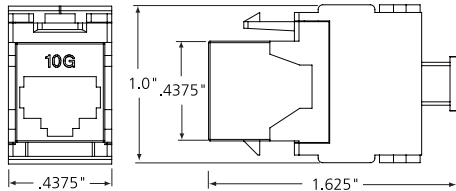
Dimensions: See page two

WARRANTY INFORMATION

For a copy of Leviton product warranties, visit www.leviton.com.

ELECTRONIC FILES

For CAD files, Typical specs, or Dimensional Line Art. (.DXF, .DWG, MS-DOS.eps or .TXT), visit www.leviton.com.



CAT 6A Shielded Jack - Front View, Side View

6S10G-S6A

PART NUMBERS

Description	Part No.
CAT 6A Shielded Jack	6S10G-S6A

QUICKPORT WALLPLATE / SHIELDED CONNECTOR COMPATIBILITY GUIDE	
QuickPort Single-Gang Wallplates	Number of Shielded Connectors Supported
41080/42080, 1-Port	1
41080/42080, 2-Port	1
41080/42080, 3-Port	2
41080/42080, 4-Port	2
41080/42080, 6-Port	4
QuickPort Single-Gang Stainless Steel Wallplates	Number of Shielded Connectors Supported
43080, 1-Port	1
43080, 2-Port	2
43080, 3-Port	2
43080, 4-Port	4
43080, 6-Port	4
QuickPort Single-Gang Angled Wallplates	Number of Shielded Connectors Supported
41081/42081, 2-Port	2
41081/42081, 4-Port	2

