

## TRACK SPEAKERS MODEL V-1013B-BK, V-1013B-GY, V-1013B-W

### FEATURES:

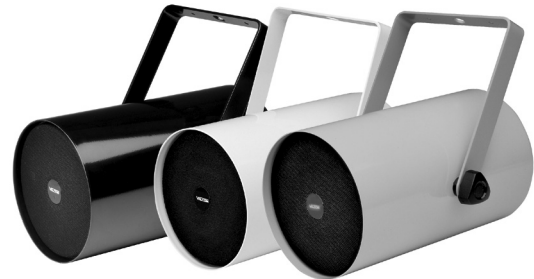
HIGH GLOSS FINISH

WEATHER RESISTANT

BLACK, WHITE OR GRAY FINISHES

OMNI-DIRECTIONAL MOUNTING

HIGH FIDELITY FULL RANGE SPEAKER



### DESCRIPTION:

Fashionable track style speaker that may be installed on wall or ceiling. Track speakers are a stylish answer for providing paging and background music in offices, restaurants and lobbies. The speaker utilizes a full range high fidelity 5 inch speaker and is filled with damping material to minimize vibrations. Effortless aiming of the speaker is accomplished by loosening two knobs.

These track speakers are available in white, black or gray high gloss finishes. A volume control is provided for easy adjustments of audio levels.

### SPECIFICATIONS:

#### SPEAKER ELEMENT

Cone Diameter: 5" (12.7 cm)

Voice Coil Impedance: 45 ohms

#### INPUT

Impedance:  $\geq$  600 ohms nominal

Signal Level: -10 dBm line level

#### OUTPUT

Rating: 93dB @ 4' (1.22 m)

#### FREQUENCY RESPONSE

70 Hz - 16 kHz

#### POWER REQUIREMENTS

50 mA @ -24 Vdc

#### ENVIRONMENT

Temperature: -4 ° to +131 °F (-20 to +55 °C)

Humidity: 0-95% Non-Condensing

#### HOUSING AND FINISH

Aluminum tube construction with white, black or gray powder coat finish

#### DIMENSIONS AND WEIGHT

5.80" (14.73 cm) Dia. x 8.80" (22.35 cm) L

Weight: 2.5 lbs (1.13 kg)

# ARCHITECTS' AND ENGINEERS' SPECIFICATIONS

## MODEL V-1013B TRACK SPEAKER

The Model V-1013B Track Speaker shall consist of a speaker baffle assembly designed to be mounted on a wall.

The speaker housing shall be 5.8" (14.73cm) in diameter and 8.8" (22.35 cm) in length. The speaker shall weigh 2.5 lbs. (1.13 kg). The speaker housing shall be constructed of aluminum tubing and finished in a white, gray or black epoxy powder coat paint.

The frequency response shall be 70 Hz to 16 kHz. The output shall be 93 db, at 4 feet. The amplifier shall operate on a -24 Vdc nominal, positive ground power supply. Operating current shall be 50 mA at -24 Vdc. Operating temperature shall be -4 to +131 °F (-20 to +55 °C) Humidity range shall be 0-95%, non condensing.

A screwdriver adjustable volume control shall be provided at the center of the grille.

### Limited Warranty

Valcom, Inc. warrants its products to be free from defects in materials and workmanship under conditions of normal use and service for a period of one year from the date of shipment. The obligation under this warranty shall be limited to the replacement, repair or refund of any such defective device within the warranty period, provided that:

1. inspection by Valcom, Inc. indicates the validity of the claim,
2. the defect is not the result of damage, misuse, or negligence after the original shipment,
3. the product has not been in any way repaired by others and that factory sealed units are unopened.  
(A service charge plus parts and labor will be applied to units defaced or physically damaged).
4. freight charges for the return of products to Valcom, Inc. are prepaid,
5. all units "out of warranty" are subject to a service charge. The service charge will cover minor repairs  
(major repairs will be subject to additional charges for parts and labor).

**This warranty is in lieu of and excludes all other warranties expressed or implied, and in no event shall Valcom, Inc. be liable for any anticipated profits, consequential damages, loss of time or other losses incurred by the buyer in connection with the purchase, operation or use of the product.**

This warranty specifically excludes damage incurred in shipment. In the event a product is received in damaged condition, the carrier should be notified immediately. Claims for such damage should be filed with the carrier involved in accordance with the F.O.B. point.