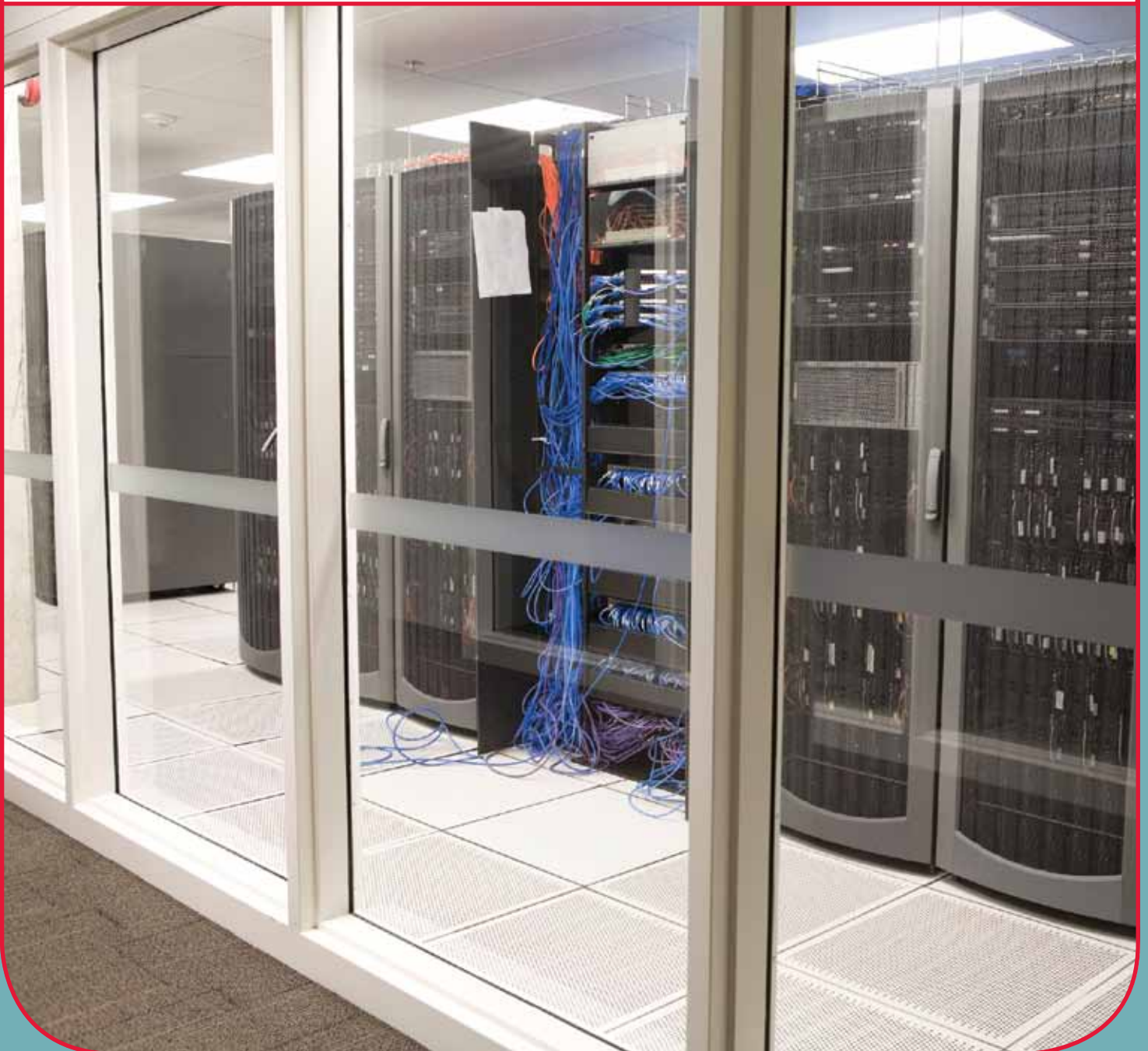


## RACK SOLUTIONS



## RACK SOLUTIONS

### CONTENTS:

- RS-2** Free Standing Racks & Cabinets
- RS-5** Wall Mount Racks, Cabinets, & Brackets
- RS-10** Shelving
- RS-12** Cable Management
- RS-14** Accessories

As a logical extension to our connectivity components, Optical Cable Corporation offers a complete product line featuring an array of high-performance network, data storage and telecommunications management systems for commercial and residential industries. The OCC rack solutions product line encompasses solutions for data cabinets, wall-mount enclosures, horizontal and vertical cable management systems and open frame relay racks. These products meet the demands of all network segments including LAN, WAN, Metro Co-location, POPs and Gateways. They serve the equipment, cross-connect and termination needs for copper, fiber and coaxial multi-media applications.

In addition to an extensive product line, OCC can assist customers in custom configuring a solution specific to protocol needs. Whether installing open frame racks into an equipment room or designing a state-of-the-art data center, our rack solutions product line offers reliable components with the advantage of professional technical support.



CSM-2

## Free Standing Racks & Cabinets



In keeping with our dedication to providing convenient solutions for structured cabling needs, OCC offers the Rack Max, an integrated open frame rack and cable management system in one. The Rack Max Cable Management Rack is able to accommodate 19" or 23" mounting widths in an 84" high open frame rack configuration. Its wide stance provides above average strength and a high capacity 6.5" deep aluminum vertical channel allows for safe management of large bundles of copper or fiber cabling. Overall, the Rack Max solution offers maximum rack space with greater mounting flexibility and the added bonus of an integrated vertical cable path for increased cable management and greater aesthetic appeal.

- Built-in protected vertical cable pathway
- Vertical channels tapped on front and back with 4" x 4" side holes for easy cable entry
- Top bars have parallel and perpendicular attachment points for cable tray or ladder rack
- Built-in bend radius protection
- May accommodate 19" or 23" mounting widths
- (18) Hook & Loop fasteners
- EIA standard 5/8", 5/8", 1/2" hole mounting patterns with #12-24 tapped holes
- Sturdy aluminum construction
- Durable black powder-coat finish

### Rack Max Cable Management Rack

Catalog Number	Description	Dimensions	Load Rating	RU's	Shipping Weight
CMR45	Rack Max 45RU Cable Management Rack, 19" or 23" Mounting	84"H x 6.5"D	1000 lbs	45	43 lbs

### Open Frame Racks

When it comes to standard EIA-compliant aluminum open-frame relay racks, OCC offers top of the line relay racks that feature a variety of heights to meet any cabling infrastructure needs. Ideal for equipment rooms and telecommunications closets, our open frame rack is an excellent foundation to build any network system.

- 3" deep vertical channels are tapped on front and back for #12-24 pilot point combo head screws
- Side web holes for linking racks
- 2 top and 2 bottom crossbars
- 7/8" holes for floor bolting
- Sturdy aluminum construction
- Available in durable black powder-coat finish or silver coating



Open Frame Racks

Catalog Number	Description	Dimensions	Load Rating	RU's	Shipping Weight
OF4502	84" Open Frame Rack, Silver	84"H x 19"W x 3"D	900 lbs	45	32 lbs
OF4503	84" Open Frame Rack, Black	84"H x 19"W x 3"D	900 lbs	45	32 lbs
OF4503HD	84" Heavy Duty Open Frame Rack, Black	84"H x 19"W x 3"D	1200 lbs	45	40 lbs
OF4504	84" Open Frame Rack, Silver	84" H x 23"W x 3"D	900 lbs	45	v33 lbs
OF4505	84" Open Frame Rack, Black	84"H x 23"W x 3"D	900 lbs	45	33 lbs
OF3602	68.25" Open Frame Rack, Silver	68.25"H x 19"W x 3"D	900 lbs	36	29 lbs
OF3603	68.25" Open Frame Rack, Black	68.25"H x 19"W x 3"D	900 lbs	36	29 lbs
OF2402	48" Open Frame Rack, Silver	48"H x 19"W x 3"D	900 lbs	24	24 lbs
OF2403	48" Open Frame Rack, Black	48"H x 19"W x 3"D	900 lbs	24	24 lbs

### Free-Standing Cabinets

With OCC's complete line of free-standing cabinets, customers can provide seamless, upscale integration for any size network installation. This cabinet line offers a broad variety of solutions to fit any system application and the finest quality workmanship with the flexibility to meet any infrastructure demand.

- Removable sides and doors
- Four adjustable mounting rails
- Vented top with (3) 3" diameter cable entry points
- Universal EIA alternating 5/8", 5/8", 1/2" hole pattern
- All aluminum frame construction
- Black powder-coat finish
- IN-SERIES installation kit for multi-bay applications available
- Filter kits, bottom panels, and more accessories also available



cc 4 | RACK SOLUTIONS

**19" Free-Standing Cabinets**

All 19" free-standing cabinets feature:

- Four mounting rails
- Vented top with three 3" diameter cable entry points
- Quick-release locking vented sides
- Smoked Plexiglas™ locking front door
- Solid steel locking vented rear door
- Leveling feet or locking casters optional
- Includes #12-24 pilot-point combo-head screws



**19" Free Standing Cabinets**

Catalog Number	Description	Dimensions	Load Rating	RU's	Shipping Weight
CC1203	19" Free Standing Cabinet, Black	24"H x 25"W x 24"D	240 lbs	12	90 lbs
CC1803	19" Free Standing Cabinet, Black	36"H x 25"W x 24"D	360 lbs	18	115 lbs
CC2403	19" Free Standing Cabinet, Black	48"H x 25"W x 24"D	480 lbs	24	130 lbs
CC3003	19" Free Standing Cabinet, Black	60"H x 25"W x 24"D	600 lbs	30	150 lbs
CC3803	19" Free Standing Cabinet, Black	72"H x 25"W x 24"D	760 lbs	38	165 lbs
CC3804	19" Free Standing Cabinet, Black	72"H x 25"W x 32"D	760 lbs	38	195 lbs
CC3807	19" Free Standing Server Cabinet, Black	72"H x 25"W x 36"D	760 lbs	38	230 lbs
CC4503	19" Free Standing Cabinet, Black	84"H x 25"W x 24"D	900 lbs	45	215 lbs
CC4504	19" Free Standing Cabinet, Black	84"H x 25"W x 32"D	900 lbs	45	220 lbs
CC4507	19" Free Standing Server Cabinet, Black	84"H x 25"W x 36"D	900 lbs	45	240 lbs

\*Add "F" for leveling feet or "C" for casters

**23" Free-Standing Cabinets**

23" free-standing cabinets offer:

- Either 23" or 19" mounting shelves with ample room for cable management
- Four shelf mounting rails
- Vented top and bottom with three 4.5" diameter cable entry points
- Quick-release locking vented sides
- Smoked Plexiglas™ locking front door
- Solid steel locking vented rear door
- Leveling feet or locking casters optional
- Includes #12-24 pilot-point combo-head screws

**23" Free-Standing Cabinets**

Catalog Number	Description	Dimensions	Load Rating	RU's	Shipping Weight
CC3805	23" Free Standing Cabinet, Black	72"H x 31"W x 24"D	760 lbs	38	230 lbs
CC3806	23" Free Standing Cabinet, Black	72"H x 31"W x 32"D	760 lbs	38	245 lbs
CC4505	23" Free Standing Cabinet, Black	84"H x 31"W x 24"D	900 lbs	45	250 lbs
CC4506	23" Free Standing Cabinet, Black	84"H x 31"W x 32"D	900 lbs	45	265 lbs

\*Add "F" for leveling feet or "C" for casters

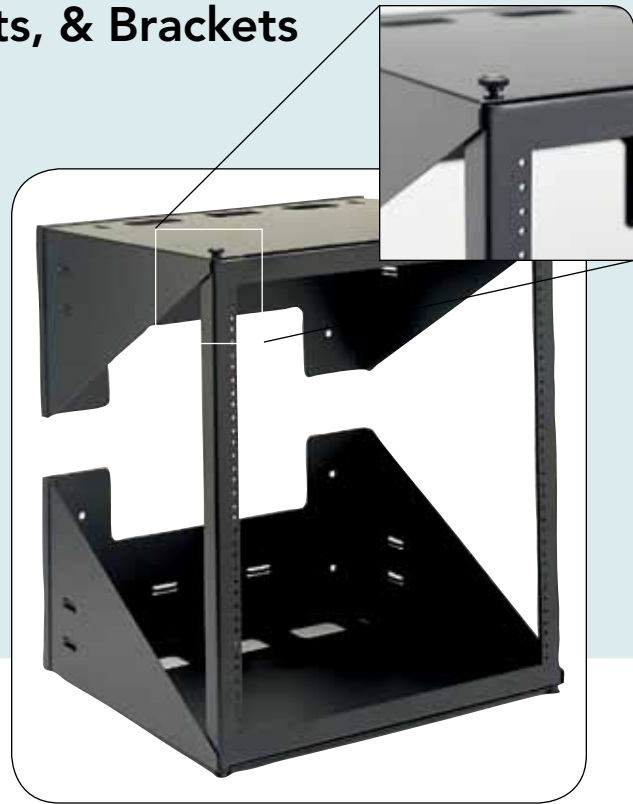


## Wall Mount Racks, Cabinets, & Brackets

### Wall Mount Swing Racks

For applications requiring wall mountable access to network connectivity components, OCC offers the Wall-mount swing racks for easy access and versatile equipment options. Like all of our products, quality is built in to the design. The 19" Swing Rack will accommodate any of OCC's horizontal cable management accessories.

- Swings open in either direction even with 12", 18" or 25" depth equipment installed
- 19" mounting rails
- Includes Hook & Loop or tie-wrap tie-down points
- Black powder-coat finish
- Durable aluminum construction



**Wall Mount Swing Racks**

Catalog Number	Description	Dimensions	Load Capacity	RU's	Shipping Weight
SR412	19" Wall Mount Swing Rack, Black	46.3"H x 20.6"W x 12"D	120 lbs	25	29 lbs
SR418	19" Wall Mount Swing Rack, Black	46.3"H x 20.6"W x 18"D	120 lbs	25	39 lbs
SR425	19" Wall Mount Swing Rack, Black	46.3"H x 20.6"W x 25"D	120 lbs	25	58 lbs
SR312	19" Wall Mount Swing Rack, Black	37.6"H x 20.6"W x 12"D	100 lbs	20	28 lbs
SR318	19" Wall Mount Swing Rack, Black	37.6"H x 20.6"W x 18"D	100 lbs	20	38 lbs
SR325	19" Wall Mount Swing Rack, Black	37.6"H x 20.6"W x 25"D	100 lbs	20	57 lbs
SR212	19" Wall Mount Swing Rack, Black	23.5"H x 20.6"W x 12"D	80 lbs	12	25 lbs
SR218	19" Wall Mount Swing Rack, Black	23.5"H x 20.6"W x 18"D	80 lbs	12	35 lbs
SR225	19" Wall Mount Swing Rack, Black	23.5"H x 20.6"W x 25"D	80 lbs	12	54 lbs

**Wall Mount Cabinet Enclosures**

When networks need added security for wall mounted applications, Optical Cable Corporation offers wall-mount cabinet enclosures. The OCC Wall Mount Enclosures feature a locking smoked Plexiglas™ or steel front door, two adjustable shelf mounting rails and a locking rear swing frame with heavy-duty quick-release hinges for easy wall mounting and fast access to the rear of installed equipment.

- Removable doors
- Two adjustable shelf mounting rails
- Disassembles for easy mounting
- Solid Steel or locking Smoked Plexiglas™ doors available
- Vented sides and top
- Ample cable entry and exit
- Accepts fan tray kits



**Wall-Mount Cabinet Enclosures**

Catalog Number	Description	Dimensions	Load Capacity	RU's	Shipping Weight
WC818	Wall-Mount Cabinet, Black	15"H x 21"W x 16"D	125 lbs	8	37 lbs
WC828	Wall-Mount Cabinet, Black	15"H x 21"W x 20"D	125 lbs	8	40 lbs
WC1218	Wall-Mount Cabinet, Black	24"H x 21"W x 16"D	125 lbs	12	50 lbs
WC1228	Wall-Mount Cabinet, Black	24"H x 21"W x 20"D	125 lbs	12	58 lbs
WC1238	Wall-Mount Cabinet, Black	24"H x 21"W x 24"D	125 lbs	12	60 lbs
WC1818	Wall-Mount Cabinet, Black	36"H x 21"W x 16"D	125 lbs	18	60 lbs
WC1828	Wall-Mount Cabinet, Black	36"H x 21"W x 20"D	125 lbs	18	65 lbs
WC1838	Wall-Mount Cabinet, Black	36"H x 21"W x 24"D	125 lbs	18	65 lbs
WC2428	Wall-Mount Cabinet, Black	45"H x 21"W x 20"D	175 lbs	24	80 lbs
WC2438	Wall-Mount Cabinet, Black	45"H x 21"W x 24"D	175 lbs	24	90 lbs

\* Replace last digit "8" with "9" for solid steel door

**teRAX™ Enclosures**

The TERAX enclosures are designed explicitly for applications requiring large zone distribution capabilities and easy installation. These cabinets offer a modular solution for housing telecommunications and networking equipment in locations requiring a safe and secure environment.

- Holds up to 4 RU of passive products and up to 3 RU of active equipment
- Design accepts all SMP Copper 2 Rack Mount Patch Panels
- Patch Panel brackets rotate 90° allowing for easy installs
- Ideal cable management allows adequate space for routing and managing patch cords
- 16 gauge CRS welded construction
- Durable powder coat finish protects equipment in isolated locations
- Load capacity: 100 lbs.



**TERAX™ Enclosures**

Catalog Number	Description	Dimensions	Load Capacity	RU's
TERAX2	Telecom Equipment Remote Access Enclosure, Select Model, Mounts 2 Patch Panels, Cylinder Lock included	40"H x 27.12"W x 6.88"D	100 lbs	4
TERAX2S	Telecom Equipment Remote Access Enclosure, Standard Model, Mounts 2 Patch Panels, Lock Tab for Padlock	40"H x 27.12"W x 6.88"D	100 lbs	4
TERAX-FK	TERAX Fan Kit			



### COMPACT SIDEWAYS-MOUNT ENCLOSURES

A perfect solution for tight spaces is the OCC Sideways-Mount Enclosures. With their compact design, these wall-mountable cabinets offer an economical means for protecting network components. Their all steel construction provides excellent protection from high traffic areas, common in retro-fit network closets. In addition to its rugged construction, oversized cable entry points and a vented top and bottom make the Sideways-Mount Enclosure an excellent solution for small spaces.

- Vented top and bottom allow airflow for network equipment
- Mounts with 4 keyhole screw slots in standard 16" stud spacing
- Includes #12-24 pilot-point combo-head screws for fast installations
- All steel construction with black powder-coat finish



CSM-2

### 19" Sideways-Mount Enclosures

For 19" mounting widths, OCC's Sideways-Mount Enclosures offer:

- Removable cover provides unobstructed access
- Standard 19" mounting
- Oversized cable entry for in-wall home-run access
- Built-in cable tie-downs for plastic tie-wraps or Hook & Loop fasteners



CSM-4

### 19" Sideways-Mount Enclosures

Catalog Number	Description	Dimensions	Load Capacity	RU's	Shipping Weight
CSM-2	19" Sideways-Mount Enclosure	20"H x 19"W x 3.75"D	75 lbs	2	17 lbs
CSM-4	19" Sideways-Mount Enclosure	20"H x 19"W x 7.25"D	75 lbs	4	17 lbs

### 23" Sideways-Mount Enclosures

#### 23" Sideways-Mount Enclosures

Catalog Number	Description	Dimensions	Load Capacity	RU's	Shipping Weight
CSM-7	23" Sideways-Mount Enclosure	22.5"H x 24"W x 13.5"D	75 lbs	7	45 lbs

#### Add-on Options

CSM-7MR	Additional Mounting Rails, Pair
FAN2	Dual Fan cooling module

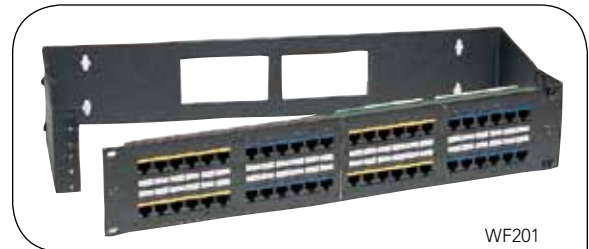


CSM-7

**Wall Mount Brackets**

OCC's Wall-Mount Brackets are best suited for mounting patch panels and mixed media panels in telecom closets or any cross-connect areas where space is a premium. These brackets are designed to offer quick network connect points for 19" mounting applications and may be stacked easily for rack-mount 110 tower applications. Either way, the OCC Wall-Mount Brackets offer durability and flexible customization to meet any cabling infrastructure need.

- Features a quick-release design for speedy access to the back of installed equipment
- Includes #12-24 pilot-point combo-head screws for quick installations
- All steel construction with black powder-coat finish



WF201



WF104



WF201



WF401



WF602

**Wall-Mount Brackets**

Catalog Number	Description	Dimension	Shipping Weight
WF101	1 RU Wall-Mount Bracket	1.75"H x 20"W x 4"D	2 lbs
WF102	1 RU Wall-Mount Bracket	1.75"H x 20"W x 8"D	2 lbs
WF201	2 RU Wall-Mount Bracket	3.50"H x 20"W x 4"D	3 lbs
WF202	2 RU Wall-Mount Bracket	3.50"H x 20"W x 8"D	4 lbs
WF203	2 RU Wall-Mount Bracket	3.50"H x 20"W x 12"D	4 lbs
WF401	4 RU Wall-Mount Bracket	7.00"H x 20"W x 4"D	5 lbs
WF402	4 RU Wall-Mount Bracket	7.00"H x 20"W x 8"D	8 lbs
WF403	4 RU Wall-Mount Bracket	7.00"H x 20"W x 12"D	8 lbs
WF404	4 RU Wall-Mount Bracket, Tilts Down	7.00"H x 20"W x 15"D	12 lbs
WF601	6 RU Wall-Mount Bracket	10.50"H x 20"W x 4"D	8 lbs
WF602	6 RU Wall-Mount Bracket	10.50"H x 20"W x 8"D	11 lbs
WF603	6 RU Wall-Mount Bracket	10.50"H x 20"W x 12"D	12 lbs

**Cable Tray Brackets**

For ladder rack applications, OCC has designed a quick solution that easily attaches to any cable tray or ladder rack. Ideal for zone wiring applications, the CTB3519 is a convenient method to access copper network cross connect points.

**Cable Tray Brackets**

Catalog Number	Description	Shipping Weight
CTB3519	2 RU Hinge Kit for Cable Tray	2 lbs

## Shelving

### 19" SHELVES FOR CABINETS OR RACKS

OCC's product line offers a full selection of shelving options for any open frame relay rack or free standing cabinet requiring 19" mounting applications. Each shelf may be ordered independently or kitted with any OCC enclosure to create a custom configured cabinet or rack.



9022

### Cantilever shelves

#### 19" Cantilever Shelves

Catalog Number	Description	Depth	Load Capacity	Shipping Weight
9021	1 RU Cantilever Shelf	6.8"D	44 lbs	2 lbs
9127	1 RU Double-sided Cantilever Shelf	16.0"D	75 lbs	5 lbs
9022	2 RU Cantilever Shelf	10.5"D	55 lbs	5 lbs
9022V	2 RU Vented Cantilever Shelf	10.5"D	50 lbs	6 lbs
RRS1914A	2 RU Deep Cantilever Shelf	14.5"D	66 lbs	6 lbs
RRS1914AV	2 RU Deep Vented Cantilever Shelf	14.5"D	66 lbs	6 lbs
9125	2 RU Double-sided Cantilever Shelf	25.0"D	90 lbs	10 lbs
9125V	2 RU Double-sided Vented Cantilever Shelf	25.0"D	85 lbs	10 lbs
9023	3 RU Cantilever Shelf	15.5"D	66 lbs	6 lbs
9023V	3 RU Vented Cantilever Shelf	15.5"D	60 lbs	6 lbs

### Four-point Cabinet Shelves

#### 19" Four-Point Cabinet Shelves



9132

Catalog Number	Description	Depth	Load Capacity	Shipping Weight
9024	Four-point Vented Cabinet Shelf	16.0"D	220 lbs	7 lbs
9025	Four-point Vented Cabinet Shelf	18.0"D	220 lbs	7 lbs
9026	Four-point Vented Cabinet Shelf	24.0"D	220 lbs	8 lbs
9027	Four-point Vented Cabinet Shelf	30.0"D	220 lbs	12 lbs
9132	Center-mount or Top-mount Shelf	20.0"D	200 lbs	10 lbs

### Sliding Shelves

#### 19" Sliding Shelves



9130

Catalog Number	Description	Depth	Load Capacity	Shipping Weight
9028	1 RU Vented Sliding Shelf	16.0"D	110 lbs	10 lbs
9121	1 RU Sliding Drawer	16.0"D	90 lbs	11 lbs
9126	1 RU Sliding Shelf for Open frame rack	16.0"D	90 lbs	10 lbs
9129	1 RU Sliding Shelf for 19" Rack Max	16.0"D	90 lbs	12 lbs
9130	2 RU Sliding Keyboard Shelf	16.0"D	90 lbs	12 lbs
9029	1 RU Vented Sliding Shelf	24.0"D	110 lbs	19 lbs

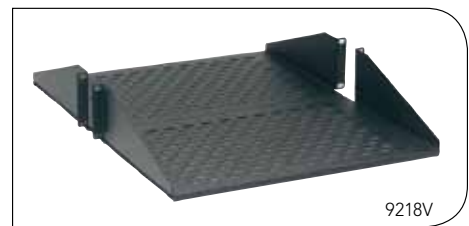
## 23" SHELVING FOR CABINETS OR RACKS

For 23" mounting applications, OCC's product line offers a variety of shelving options to choose from. As with the 19" shelving, all 23" shelves may be purchased separately or kitted with any OCC rack or cabinet to create a custom solution to meet any network foundation needs.

### Cantilever Shelves

#### 23" Cantilever Shelves

Catalog Number	Description	Depth	Load Capacity	Shipping Weight
9231	1 RU Cantilever Shelf	6.8"D	44 lbs	7 lbs
9232	2 RU Cantilever Shelf	10.5"D	55 lbs	7 lbs
9232V	2 RU Vented Cantilever Shelf	10.5"D	50 lbs	7 lbs
9218	2 RU Double-sided Cantilever Shelf	25.0"D	90 lbs	12 lbs
9218V	2 RU Double-sided Vented Cantilever Shelf	25.0"D	85 lbs	12 lbs
9233	3 RU Cantilever Shelf	15.5"D	66 lbs	9 lbs
9233V	3 RU Vented Cantilever Shelf	15.5"D	60 lbs	9 lbs



9218V

### Four-point Cabinet Shelves

#### 23" Four-point Cabinet Shelves

Catalog Number	Description	Depth	Load Capacity	Shipping Weight
9234	Four-point Vented Cabinet Shelf	16.0"D	220 lbs	9 lbs
9235	Four-point Vented Cabinet Shelf	18.0"D	220 lbs	9 lbs
9236	Four-point Vented Cabinet Shelf	24.0"D	220 lbs	10 lbs



9234

### Sliding Shelves

#### 23" Sliding Shelves

Catalog Number	Description	Depth	Load Capacity	Shipping Weight
9238	Vented Sliding Shelf	16.0"D	110 lbs	12 lbs
9226	Sliding Shelf for Open frame rack	16.0"D	90 lbs	12 lbs
9229	Sliding Shelf for 23" Rack Max	16.0"D	90 lbs	12 lbs
9239	Vented Sliding Shelf	24.0"D	110 lbs	17 lbs



9238

# Cable Management

## VERTICAL CABLE MANAGEMENT

To keep cables neatly arranged and aesthetically appealing, OCC offers vertical cable management options to organize closet space and provide additional storage for cable routing. Whether installing cabinets in a data center or open frame racks in an equipment room, using OCC's vertical options upgrades any installation.

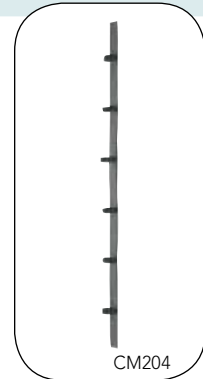


CM201

### Cabinet Vertical Cable Management

#### Vertical Cable Management for Cabinets

Catalog Number	Description
CM201	Vertical Cable Management Double Ring for Free-Standing Cabinets
CM203	Vertical Cable Manager with Velcro® Belts, for 84" Free-Standing Cabinets
CM204	Vertical Cable Manager with Velcro® Belts, for 72" Free-Standing Cabinets
CM205	Vertical Cable Manager with Velcro® Belts, for 60" Free-Standing Cabinets
CM206	Vertical Cable Manager with Velcro® Belts, for 48" Free-Standing Cabinets and 24 RU Wall Cabinets
VB13	Double-sided Cable Management Velcro® belt, 13"



CM204

### Open Frame Rack Vertical Cable Management

#### Vertical Cable Management for Open Frame Racks

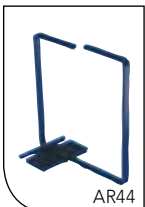
Catalog Number	Description
RC1	Vertical Cable Management, Rack Channel Ring, Pair
AR24	Vertical Cable Management, 2" x 4" Cable Ring, Pair
AR44	Vertical Cable Management, 4" x 4" Cable Ring, Pair
CM202	Vertical Cable Management Double Ring for Open frame racks
VCM3	Vertical Cable Organizer, 3" x 7" Double-sided
VCM6	Vertical Cable Organizer, 6" x 7" Double-sided
VFCM6-2D	Vertical Fiber Cable Organizer, 6" X 2' Double-sided
VFCM6-2S	Vertical Fiber Cable Organizer, 6" X 2' Single-sided
VFCM6-6D	Vertical Fiber Cable Organizer, 6" X 7' Double-sided
VFCM6-6S	Vertical Fiber Cable Organizer, 6" X 7', Single-sided
CM207	"Vortex" 84" Vertical Cable Manager for Open frame racks and CMR45 Rack Max
VCMFD-36SS	Vertical Fiber Cable Organizer, Finger Duct, 36", Single-sided, Side-mount
VCMFD-36DS	Vertical Fiber Cable Organizer, Finger Duct, 36", Double-sided, Side-mount
VCMFD-72SS	Vertical Fiber Cable Organizer, Finger Duct, 72", Single-sided, Side-mount
VCMFD-72DS	Vertical Fiber Cable Organizer, Finger Duct, 72", Double-sided, Side-mount
VCMFD-36SB	Vertical Fiber Cable Organizer, Finger Duct, 36", Single-sided, Bridge-mount
VCMFD-36DB	Vertical Fiber Cable Organizer, Finger Duct, 36", Double-sided, Bridge-mount
VCMFD-72SB	Vertical Fiber Cable Organizer, Finger Duct, 72", Single-sided, Bridge-mount
VCMFD-72DB	Vertical Fiber Cable Organizer, Finger Duct, 72", Double-sided, Bridge-mount



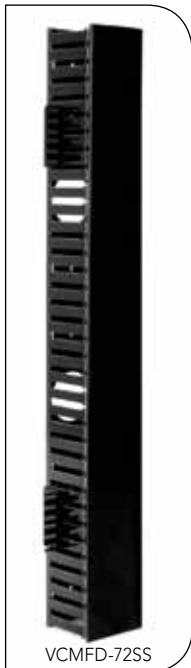
RC1



AR24



AR44



VCMFD-72SS

## HORIZONTAL CABLE MANAGEMENT

Optimize closet space and organize your cabling system with any of OCC's horizontal cable managers. This complete line of horizontal cable management provides a versatile selection for maintaining cable runs and preserving connectivity components' lifespan.

### Ring and Velcro Horizontal Cable Organizers

#### Ring and Velcro Horizontal Cable Management

Catalog Number	Description
CM101	19" Cable Management Panel, 1 RU, Rings
CM102	19" Cable Management Panel, 1 RU, Velcro® belts
CM103	19" Cable Management Panel, 2 RU, Rings
CM104	Front/Rear Side Towel Bar, 1 RU
CM105	Cable Management Tab, Velcro® belts



CM101

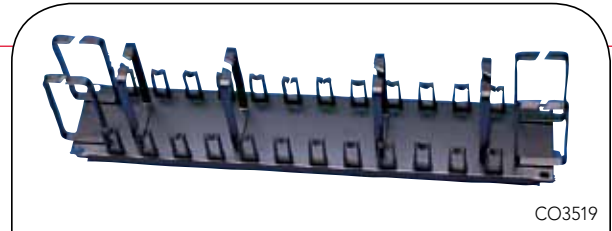


CM103

### Horizontal Cable Management

#### Horizontal Cable Organizers

Catalog Number	Description
CO17519	19" Front Side Cable Organizer, Intra-bay, 1.75", 1 RU
CO17519L	19" Front Side Cable Organizer, Inter-bay, 1.75", 1 RU
CO3519	19" Front Side Cable Organizer, Intra-bay, 3.5", 2 RU
CO3519L	19" Front Side Cable Organizer, Inter-bay, 3.5", 2 RU
COMB3519	19" Cable Organizer, Single-sided with Cover, 3.5", 2 RU
COMBD3519	19" Cable Organizer, Double-sided with Cover, 3.5", 2 RU
SB1719	19" Cable Support Bar Kit for EIA mounting



CO3519



Finger Duct Horizontal Cable Organizers

#### Finger Duct Horizontal Cable Organizers

CM401	19" Horizontal Cable Manager, finger style, 1 RU single-sided
CM402	19" Horizontal Cable Manager, finger style, 1 RU double-sided
CM403	19" Horizontal Cable Manager, finger style, 2 RU single-sided
CM404	19" Horizontal Cable Manager, finger style, 2 RU double-sided

## Accessories

To complete any structured cabling foundation, Optical Cable Corporation provides a complete collection of rack and cabinet accessories. For every application, OCC has created a product to meet that demand. From power panels to environmental control fans to casters and leveling feet, the OCC product line offers solutions that guarantee durability and are backed by our 15 year out-of-the-box warranty.

### Environmental Control



FAN2



FAN4

#### Environmental Control Options

Catalog Number	Description
FAN2	2-Fan Module, 216cfm, 115VAC, 12' cord (fits Wall Cabinets and 19" Free-Standing Cabinets)
FAN3	3-Fan Module, 325cfm, 115VAC, 12' cord (fits 23" Free-Standing Cabinets – factory installed only)
FAN310	3-Fan Housing with Fan Grilles, 1RU Rack Mount, 115VAC, 12' cord, 19" mounting brackets
FAN320	3-Fan Housing with Fan Grilles, 1RU Rack Mount, 115VAC, 12' cord, 23" mounting brackets
FAN4	4-Fan Module, 432cfm, 115VAC, 12' cord (fits 19" Free-Standing Cabinets only)
FFAN	Fan Filter
FWC16	Vent Filter Kit for 16" Deep Wall Cabinets (factory installation only)
FWC20	Vent Filter Kit for 20" Deep Wall Cabinets (factory installation only)
FWC24	Vent Filter kit for 24" Deep Wall Cabinets (factory installation only)

### Casters and Leveling Feet

#### Casters or Leveling Feet Options

Catalog Number	Description
9171HD	Heavy-Duty Locking Swivel Casters for Free-Standing Cabinet, set of four
9172	Heavy-Duty Leveling Feet for Free-Standing Cabinets, set of four



9171HD

**Power Panels**

**Power Panel Options**

Catalog Number	Description
PS115	19" Rack-Mount Power Panel with Surge Suppression, 115VAC 15A, 12 outlets, 15' cord
PS120	19" Rack-Mount Power Panel with Surge Suppression, 115VAC 20A, 12 outlets, 15' cord
PS215	19" Rack-Mount Power Panel, 115VAC 15A, 10 outlets, 15' cord
PS220	19" Rack-Mount Power Panel, 115VAC 20A, 10 outlets, 15' cord
PS315	48" Power Strip, 115VAC 15A, 8 outlets, 15' cord
PS320	48" Power Strip, 115VAC 20A, 8 outlets, 15' cord



PS115 (front)



PS115 (back)

**Seismic Anchoring Kits**

**Seismic Anchoring Options**

Catalog Number	Description
SAK	Seismic Anchoring Kit for 19" Free-Standing Cabinets (2 angles)
SBK24	Seismic Bracing/Anchoring Kit for 24" Deep Free-Standing Cabinets (factory installation only)
SBK32	Seismic Bracing/Anchoring Kit for 32" Deep Free-Standing Cabinets (factory installation only)
SBK36	Seismic Bracing/Anchoring Kit for 36" Deep Free-Standing Cabinets (factory installation only)



SAK

**Grounding Bars**

**Grounding Options**

Catalog Number	Description
GRD19	19" Horizontal Copper Rack-Mount Grounding Bar, 1/8" x 1"
GRD30	Vertical-Mount Copper Grounding Bar for 60"/30RU Cabinet, 1/8" x 1"
GRD38	Vertical-Mount Copper Grounding Bar for 72"/38RU Cabinet, 1/8" x 1"
GRD45	Vertical-Mount Copper Grounding Bar for 84"/45RU Cabinet, 1/8" x 1"

**Reducers**

**23" to 19" Reducer Options**

Catalog Number	Description
RED1	23"-to-19" Reducer Bracket, Pair, 1RU
RED2	23"-to-19" Reducer Bracket, Pair, 2RU
RED3	23"-to-19" Reducer Bracket, Pair, 3RU



**Blank Filler Panels**



**19" Blank Filler Panel Options**

Catalog Number	Description
9041	1 RU Blank Filler Panel, Black Wrinkle Powder-coat Finish
9042	2 RU Blank Filler Panel, Black Wrinkle Powder-coat Finish
9043	3 RU Blank Filler Panel, Black Wrinkle Powder-coat Finish
9044	4 RU Blank Filler Panel, Black Wrinkle Powder-coat Finish

**Miscellaneous Accessories**

**Additional Rack or Cabinet Accessory Options**

Catalog Number	Description
9072	Splice Kit for linking Free-Standing Cabinets in series
9074	M6 Mounting Screws with Washer and Cage Nut, set of four each
9075	M6 Mounting Screws with Washer and Cage Nut, set of 100 each
9173	#12-24 Pilot-Point Combination-head Rack Screws, Bag of 50, Silver Finish
9174	#12-24 Pilot-Point Combination-head Rack Screws, Bag of 50, Black Finish
9176	#12-24 Pilot-Point Combination-head Rack Screws, Bag of 100, Silver Finish
9177	#12-24 Pilot-Point Combination-head Rack Screws, Bag of 100, Black Finish
CM106	Cable Tray/Ladder Rack Top Anchor for 3" Deep Relay Rack, with cable waterfall, Black
CM107	Cable Tray/Ladder Rack Top Anchor for Free-Standing Cabinets (factory installation only)
CBP-24	Cabinet Bottom Plate for 19" x 24" Deep Free-Standing Cabinet, specify solid or vented
CBP-32	Cabinet Bottom Plate for 19" x 32" Deep Free-Standing Cabinet, specify solid or vented
CBP-36	Cabinet Bottom Plate for 19" x 36" Deep Free-Standing Cabinet, specify solid or vented