



CONNECTED INFRASTRUCTURE

Legrand solutions, backed by industry leading sales, design and support teams, are the foundation for Connected Infrastructure, a comprehensive approach to the network. Through Connected Infrastructure, Legrand delivers maximum performance, time savings, space optimization, superior customer experience and sustainability by design, to address your challenges, today and tomorrow.



Guaranteed Performance

- Reliability guaranteed
- Network protection
- Uptime



Save Time

- Easy installation
- Efficient moves, adds and changes
- Better ROI



Optimize Space

- Increased density
- Higher capacity
- Flexible and scalable designs



Superior Experience

- Engineering expertise
- Collaborative design
- Local to global relationship



Enable Sustainability

- Environmental stewardship
- Regulatory compliance
- Energy-efficient solutions



“The implementation of the Mighty Mo 20 in our facility supported the 3 F’s of our building network; Fit, Form and Function. The rack system solution provided the most proficient and enriched feature set, all at the same time, delivering an aesthetically pleasing platform and pathway for network connectivity and electronic hardware migration growth.”

– DATA CENTER OPERATIONS MANAGER,
FINANCIAL INSTITUTION

designed to be better.™



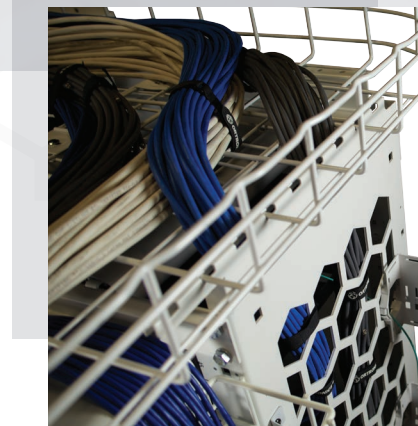
Data Communications
125 Eugene O'Neill Drive
New London, CT 06320
800.934.5432
www.legrand.us

570 Applewood Crescent
Vaughan, Ontario L4K 4B4
905.738.9195
www.legrand.ca

Follow Us



designed to be better.™



MIGHTY MO 20 is a complete cable management solution that is designed to complement the entire Legrand Product Offering. The Mighty Mo 20 product offering creates a physical infrastructure that maximizes performance, while allowing for infinite cable routing schemes. No two networks are the same, and Mighty Mo 20, with its long list of standard Accessories, can enable countless configurations for equipment and cable pathways.

Mighty Mo 20 has been designed with 4 major physical infrastructure guidelines, speed, efficiency, performance, and flexibility.

1. Speed of assembly—Channel racks allow for single person build
2. Efficiency of cable management—Ensuring proper cable support and bend radius
3. Performance of the network-Stabilizing cable destinations
4. Flexibility- Build unlimited cable pathways throughout the system

Some of the accessories and features that enable the 4 guidelines include:

Speed

- Speed nuts
- Grounding and bonding built in feature
- Vertical manager hanging clip
- Cablofil and tubular runway mounting brackets

Efficiency

- Zero RU horizontal manager
- 180° Bend limiting clip
- Hexguard™ cable passage
- Universal cable trough

Performance

- Large capacity vertical managers
- Integral and seamless integration of all products
- Airflow baffles for side breathing equipment

Flexibility

- Patented hex pattern sidewalls
- Depth of channels ranging up to 30" deep
- Heights available up to 9'



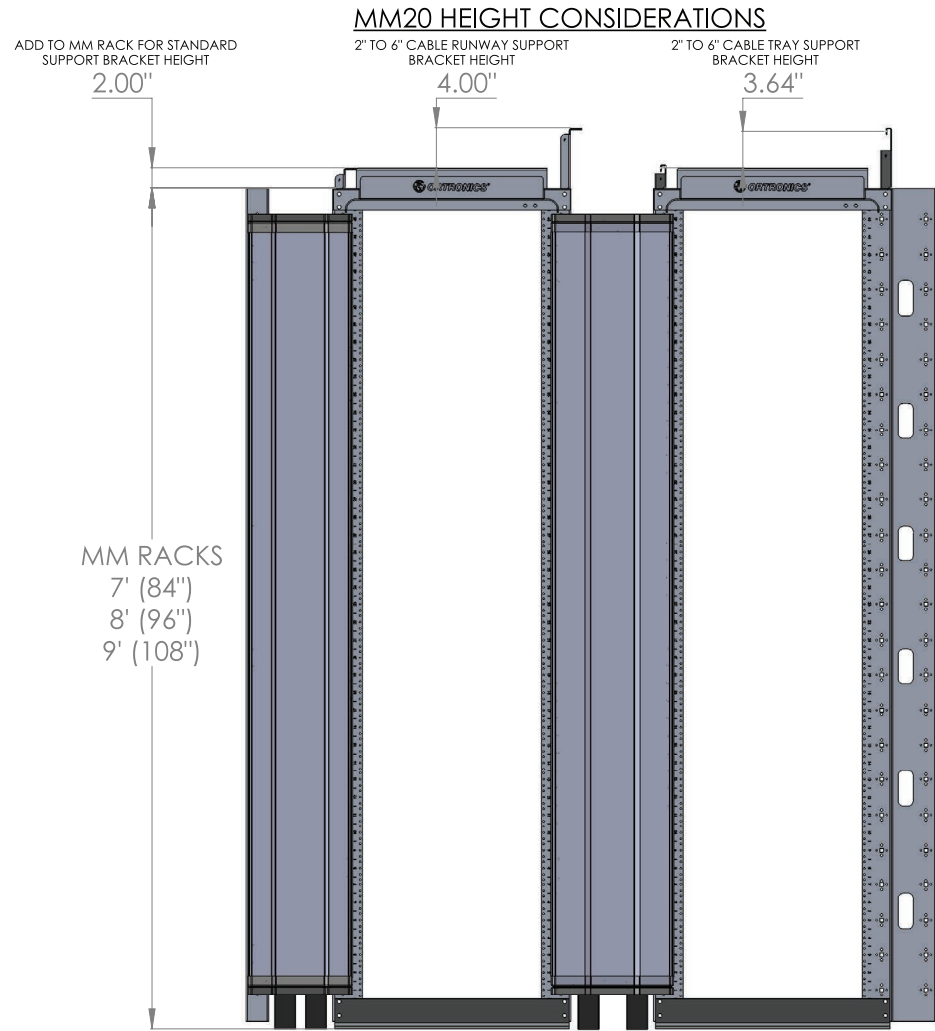
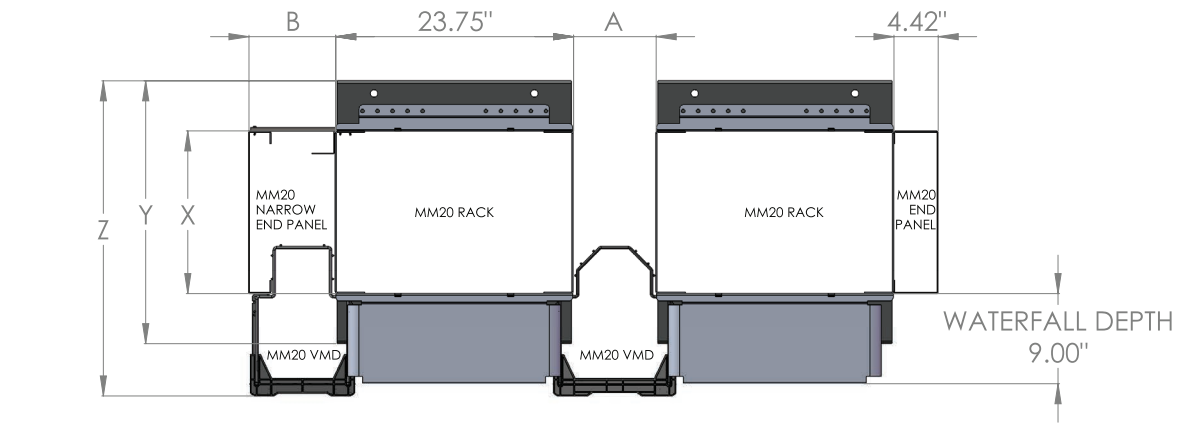
MM20 FLOOR SPACE CONSIDERATIONS

MM20 RACK AND MANAGER DEPTH REQUIREMENTS

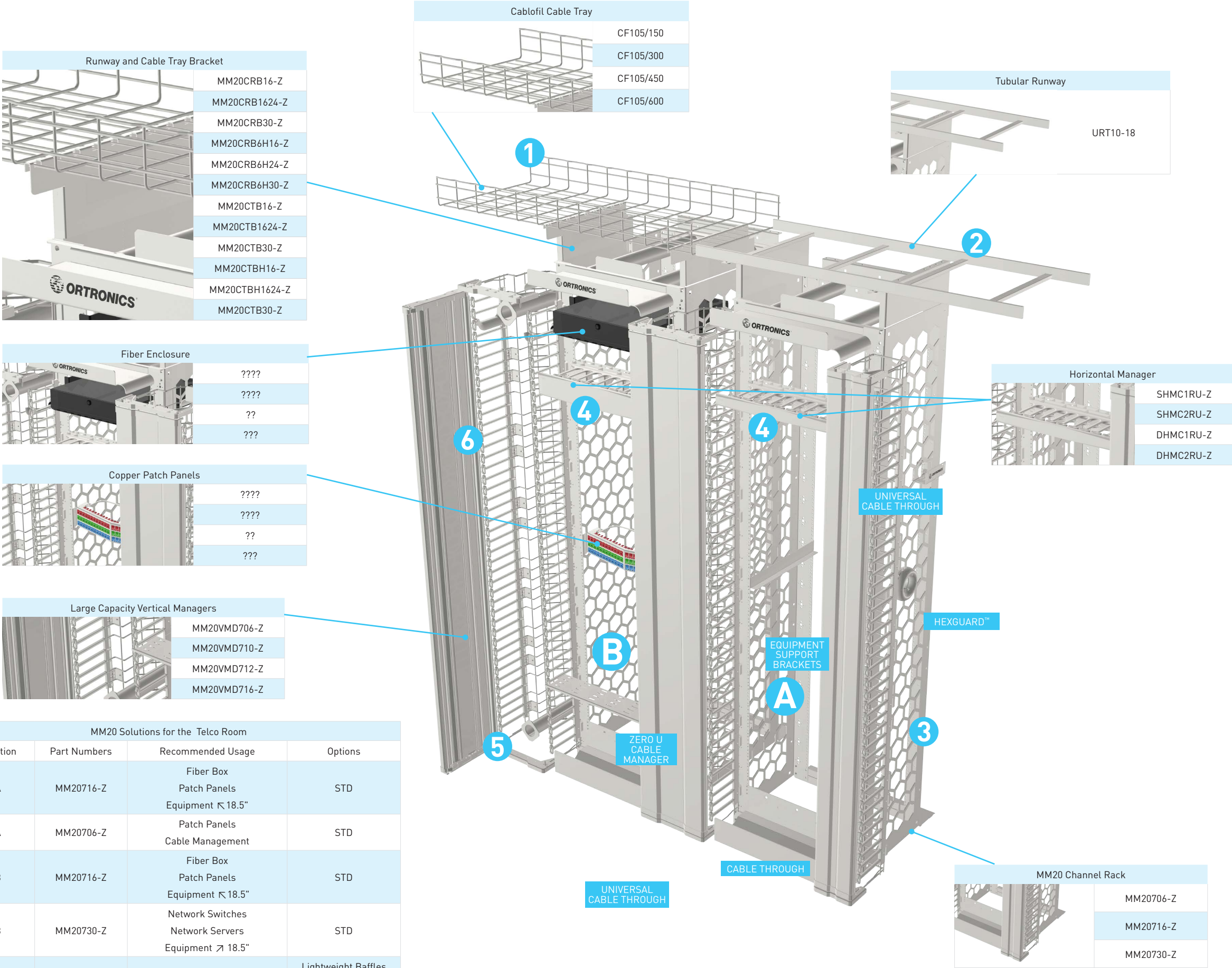
PART #	"X" = RACK RAIL DEPTH	"Y" = OVERALL RACK DEPTH INCLUDING BASE ANGLES	"Z" = OVERALL RACK DEPTH INCLUDING THE VMD
MM20X06	6.5"	16.5"	21.75"
MM20X10	10.5"	20.5"	25.75"
MM20X16	16.25"	26.25"	31.5"
MM20X24	24"	34"	39.25"
MM20X30	30"	40"	45.25"
MM20X36	36"	46"	51.25"
MM20X42	42"	52"	57.25"

MM20 VERTICAL MANAGER SPACING

PART #	"A" = DISTANCE BETWEEN RACKS NEEDED PER MANAGER	"B" = DISTANCE FROM OUTER RACK RAIL TO OUTER NARROW END PANEL SURFACE
MM20VMDX06	2.5"	4.7"
MM20VMDX10	6.5"	8.7"
MM20VMDX12	8.25"	10.45"
MM20VMDX16	12.25"	14.45"



MIGHTY MO 20 CABLE MANAGEMENT SYSTEM
BUILT FOR THE TELCO ROOM



CABLE FILL RATES BASED ON
MAXIMUM RECOMMENDED 60% FILL

1 Cablefil Cable Tray Fill Rate

Part Number	Width	Cat 5e .215 dia	Cat 6 .230 dia	Cat 6a .290 dia	cat 6e .22 dia
CF105/150	6"	594	510	320	583
CF105/300	12"	352	300	192	352
CF105/450	18"	539	460	288	528
CF105/600	24"	715	610	384	704

2 Tubular Runway Fill Rate

Part Number	Width	Cat 5e .215 dia	Cat 6 .230 dia	Cat 6a .290 dia	cat 6e .22 dia
URT10-18	18"	96	90	35	94

3 Mighty Mo 20 Vertical Manager Fill Rate

Part Number	Width	Cat 5e .215 dia	Cat 6 .230 dia	Cat 6a .290 dia	cat 6e .22 dia
MM20VMD706	6"	255	216	142	245
MM20VMD710	10"	689	583	365	635
MM20VMD712	12"	819	719	443	780
MM20VMD716	16"	1229	1053	651	1164

4 Horizontal Manager Fill Rate

Part Number	Size	Cat 5e .215 dia	Cat 6 .230 dia	Cat 6a .290 dia	cat 6e .22 dia
DHMC1RU Front	1RU front	12	12	9	12
DHMC1RU Rear	1RU rear	18	13	7	17
DHMC2RU Front	2RU front	78	72	36	72
DHMC2RU Rear	2RU rear	68	58	38	60

5 Mighty Mo 20 Channel Rack Fill Rat

Part Number	Size	Cat 5e .215 dia	Cat 6 .230 dia	Cat 6a .290 dia	cat 6e .22 dia
MM20716	16.25" depth	308	287	165	301
MM20724	24" depth	462	427	245	448
MM20730	30" depth	581	539	305	567

6 Mighty Mo 20 Vertical Manager Single RU Fingers

Part Number	Size	Cat 5e .215 dia	Cat 6 .230 dia	Cat 6a .290 dia	cat 6e .22 dia
N/A	1RU	56	39	22	42

MM20 TOOLLESS PDU APPLICATION CHART

PART #	DESCRIPTION	LOCATION
OR-MM20PDUMBVM1W	CAGE MOUNT, 1 WIDE	A
OR-MM20PDUMBVM2W	CAGE MOUNT, 2 WIDE	B
OR-MM20PDUMBFT1W	RACK MOUNT, FLAT, 1 WIDE	C
OR-MM20PDUMBFT2W	RACK MOUNT, FLAT, 2 WIDE	D
OR-MM20PDUMB1D1W	RACK MOUNT, 1 DEEP, 1 WIDE	E
OR-MM20PDUMB1D2W	RACK MOUNT, 1 DEEP, 2 WIDE	F
OR-MM20PDUMB2D1W	RACK MOUNT, 2 DEEP, 1 WIDE	G
OR-MM20PDUMB2D2W	RACK MOUNT, 2 DEEP, 2 WIDE	H

