

# product spotlight

## NEMA 12K WALL MOUNT ENCLOSURE

NEMA Type 12K Enclosures are constructed for indoor use to provide a degree of protection to personnel against access to hazardous parts; protection to equipment inside the enclosure against ingress of solid foreign objects (falling dirt and circulating dust, lint, and fibers); and protection with respect to harmful effects on the equipment due to the ingress of water (dripping and light splashing).

### FEATURES

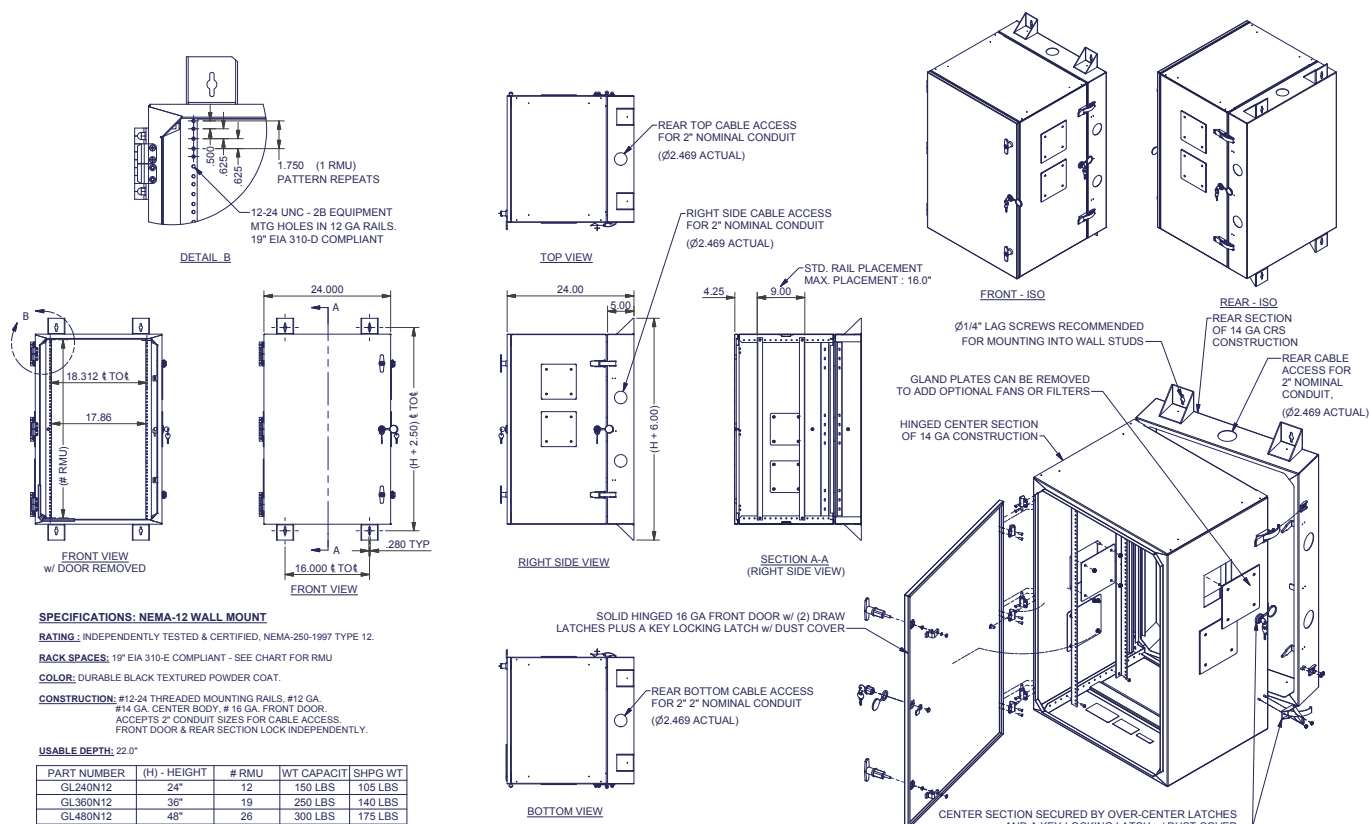
- 19" EIA 310-E Compliant
- 2 pair of #12-24 rails, adjustable front to rear; includes rack mounting hardware
- Keyed locked with dust covers
- 14 gauge main body and rear section
- Front and rear sections lock independently
- 2" conduit knockouts on back panels
- N12 wall mounts are reversible for left or right hand opening; N12A wall mounts are hinged on the left and are not reversible
- N12 wall mounts feature removable cover plates (on the left and right side of the center section) for fan and filter assemblies; N12A wall mounts feature a mounting pattern on the left side to accept AC units (fans cannot be used in conjunction with AC units)



Available in black only

PART NO.	DESCRIPTION
GL240N12	24.00"H x 24.00"W x 24.00"D, Rack Space 12 RMU, Wt. cap. 150 lbs., Shipping wt. 105 lbs.; can accept one FFKN12-A4
GL240N12A	Same as above except able to accept GL1000MMR/GL1300MMR AC Unit
GL360N12	36.00"H x 24.00"W x 24.00"D, Rack Space 19 RMU, Wt. cap. 250 lbs., Shipping wt. 140 lbs.; can accept two FFKN12-A4
GL360N12A	Same as above except able to accept GL1000MMR/GL1300MMR AC Unit
GL480N12	48.00"H x 24.00"W x 24.00"D, Rack Space 26 RMU, Wt. cap. 300 lbs., Shipping wt. 175 lbs.; can accept three FFKN12-A4
GL480N12A	Same as above except able to accept GL22000MMR AC Unit

# NEMA 12K WALL MOUNT



For drawings of wall mounts that accept AC units, please visit [WeRackYourWorld.com](http://WeRackYourWorld.com)

## ACCESSORIES

### PART NO.

### DESCRIPTION

GL1000MMR	1000 BTU AC Unit, 120V/60Hz, 3.1 amps; for use with GL240N12A and GL360N12A
GL1300MMR	1300 BTU AC Unit, 120V/60Hz, 3.1 amps; for use with GL240N12A and GL360N12A
GL2200MMR	2200 BTU AC Unit, 120V/60Hz, 3.1 amps; for use with GL480N12A
FFKN12-A4	Fan Assembly (includes filter) and exhaust filter, 38 CFM, 115V
FILTER-10	Package of five replacement filters for FFKN12-A4
7219-SR14	14 position (6 front/8 back) Power Strip for 19" mounting; 5-15R receptacle and 5-15P plug with surge protector

[WeRackYourWorld.com](http://WeRackYourWorld.com)

#### CORPORATE HEADQUARTERS

P.O. Box 551  
Edinboro, PA 16412  
1.866.TRY.GLCC  
(1.866.879.4522)  
Phone: 814.734.7303  
Fax: 814.734.3907  
glcc@greatcabinets.com

#### GREAT LAKES MANUFACTURING, INC.

1521 Enterprise Road  
Corry, PA 16407  
Phone: 814.734.2436  
Fax: 814.665.7025  
glm@greatmanufacturing.net

#### WESTERN DISTRIBUTION

4750 Joule Street  
Reno, NV 89502  
Phone: 775.829.9913  
Fax: 775.829.9926  
glcc@greatcabinets.com

#### SOUTHEAST DISTRIBUTION

3630 Shaw Blvd.  
Suite 4, Naples, FL 34117  
Phone: 1.866.TRY.GLCC  
Fax: 239.304.1226  
glcc@greatcabinets.com

#### GREAT LAKES INTERNATIONAL LTD.

Aerbridge House, Unit 14  
Dunshaughlin Business Park  
Dunshaughlin Co. Meath  
Ireland  
Phone: 011 353 1 825 8777  
Fax: 011 353 1 825 8778  
glcc@greatcabinets.com

#### GREAT LAKES HUNGARY KFT

Zsurló utca 13  
8000 Székesfehérvár  
Hungary  
Phone: 011 36 22 880 420  
Fax: 011 36 22 880 429  
glcc@greatcabinets.com