



Data Center Solutions

Entrance Facility

Main Distribution Area

Horizontal and Equipment Distribution Areas

1st Edition



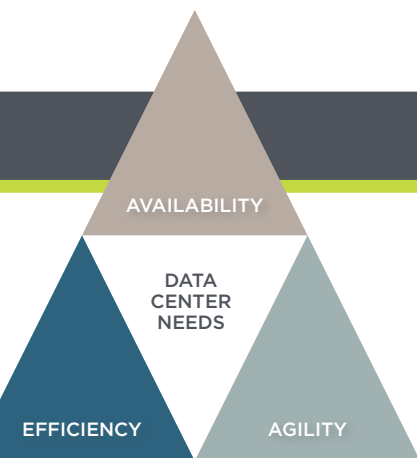
Data Center Solutions

Entrance Facility

Main Distribution Area

Horizontal and Equipment Distribution Areas

Introduction.....	4
Entrance Facility	6
Main Distribution Area	7
Horizontal Distribution Area	11
Equipment Distribution Area.....	14
Bulk Cable and Connectors.....	17



Data Center Solutions

TE Connectivity (TE) jointly develops solutions with many of the world's leading data center equipment manufacturers. This, combined with global reach and innovative managed connectivity technology, puts us in a unique position to help our customers deliver on their business requirements by creating a *resilient*, *efficient* and *agile* data center infrastructure.

AGILITY. Networks constantly change and grow. Our Storage Area Management Solution (SAM) and Q3000 high-density fiber solutions can help ensure successful network upgrades and implementations with maximum ease and control.

AVAILABILITY. TE's managed connectivity solutions, including our AMPTRAC 9th wire technology and Quareo connection point identification technology can help increase uptime, resilience and service continuity by delivering an automated, real-time understanding of end-to-end network connectivity.

EFFICIENCY. Our energy saving MRJ21 cabling system, along with industry-leading high density cable management solutions like our FiberGuide™ optical raceway, can help ensure stringent CAPEX and OPEX control.

HORIZONTAL AND EQUIPMENT DISTRIBUTION AREAS



MRJ21 Patch Panel



Fiber Panels



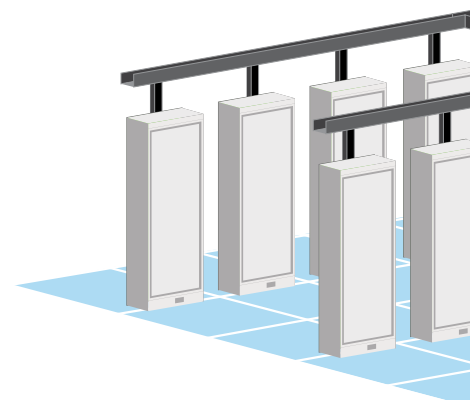
Fiber Cable Assembly



Shielded and Unshielded Copper Systems for 10 Gigabit Ethernet Applications



FiberGuide Optical Raceway



MAIN DISTRIBUTION AREA



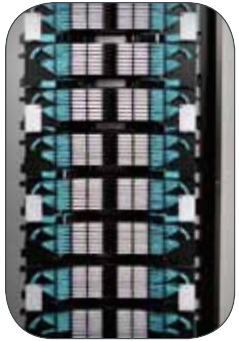
Managed Connectivity

Quareo, AMPTRAC, Infrastructure Configuration Manager Software



FiberGuide

Optical Raceway



Q-Frame



MPO Cassette



Storage Area Management

ENTRANCE FACILITY



HighBand Block



Fiber Panel

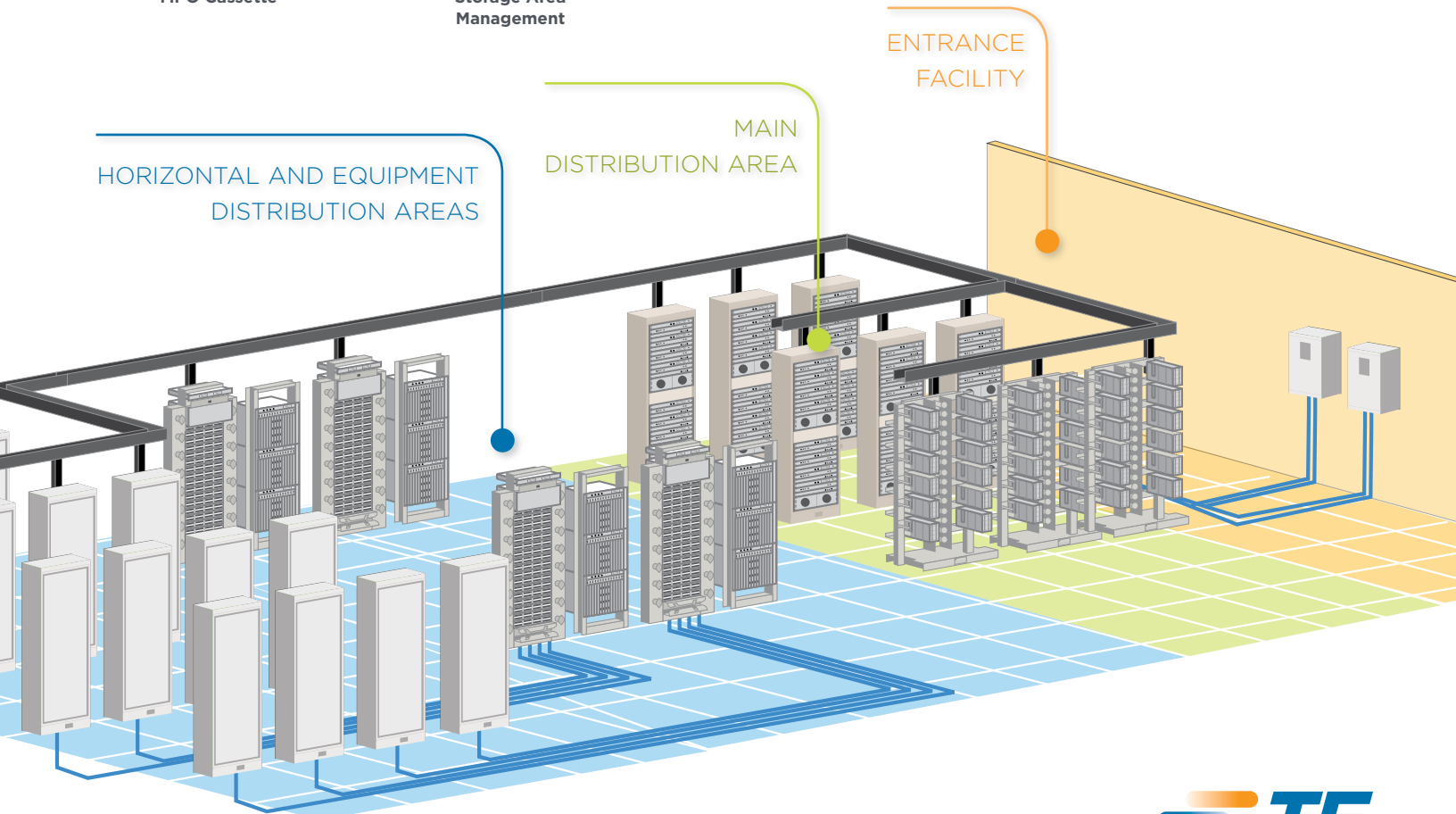


Splice Cabinet

ENTRANCE FACILITY

HORIZONTAL AND EQUIPMENT DISTRIBUTION AREAS

MAIN DISTRIBUTION AREA



ENTRANCE FACILITY

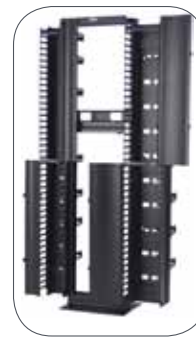
The entrance facility is the location for access provider equipment and demarcation points as well as the interface with campus cabling systems. Larger data centers may incorporate multiple entrance facilities. TE solutions provide termination, splice storage, and protection for service provider handoffs and backbone cabling that can help maximize data center bandwidth and uptime.



HighBand Block



Fiber Panel



Copper Cable Management



Splice Cabinet

Description	Part Number
-------------	-------------

FIBER

Fiber Cabinet	OMX 600 platform, black OMX splice cabinet	Cable exit up	MX6-BSPL-1440-U7
		Cable exit down	MX6-BSPL-1440-D7
Fiber Patch Panel	24-position, singlemode SC		FL2-CB70024PW-2A02 FL2-CB80024AN-2C50
Fiber Patch Cords	LC-LC singlemode, 2 mm zipcord LC-LC connectors	1 meter	PAT-LCLC-PSOC001M
		2 meter	PAT-LCLC-PSOC002M
		3 meter	PAT-LCLC-PSOC003M
		5 meter	PAT-LCLC-PSOC005M
		10 meter	PAT-LCLC-PSOC010M
	SC to SC, duplex, 2.0 mm, plenum	1 meter	PAT-SCSC-PSOC001M
		2 meter	PAT-SCSC-PSOC002M
		3 meter	PAT-SCSC-PSOC003M
		5 meter	PAT-SCSC-PSOC005M
		10 meter	PAT-SCSC-PSOC010M
Fiber Rack	Q Frame 19" channel rack		1933559-1

COPPER

Copper Rack; 19"	2 post, 3" deep, 2 post rack		1933559-1
	4 post adjustable, 4 post rack		1933570-1
Copper Cable Management	Horizontal 2U panel	Single sided	1933532-1
		Double sided	1933533-1
	Double-sided vertical manager	6"	1933534-1
		6" Combination	1933540-1
HighBand Block	300-pair kit, 12-way kit	Cat 6A	6450 1 107-01
		Cat 6	6450 1 101-10
	12-way cable management kit; Includes (2) cable management rings and (1) cover.		6450 1 103-10
	Cable management rings (2)		6450 2 156-20
	Cover (1)		6450 2 158-20
	Cable troughs	Cable trough top (1)	6450 2 157-10
		Cable trough bottom (1)	6450 2 157-20

See page 17 for more information regarding bulk cable and connectors.

MAIN DISTRIBUTION AREA

The main distribution area houses the main cross-connect as well as core routers and switches for local area network and storage area network infrastructures. TE offers high-density infrastructure solutions, such as the Q-Frame, and industry-leading cable management systems like the FiberGuide Optical Raceway, which can help maximize uptime and decrease operating costs in this area, where higher optical fiber cable counts require specialized solutions.



Managed Connectivity: Quareo, AMPTRAC, and Infrastructure Configuration Management Software



SIGMA-Link



MPO Cassette



Storage Area Management



FiberGuide
Optical Raceway



Q-Frame

Description		Part Number	
FIBER			
Fiber Patch Panels; unmanaged	Q3000 Chassis	Q3200 Chassis: 1 RU, accommodates 2 blades	QUCH-1RU
		Q3400 Chassis: 2 RU, accommodates 4 blades	QUCH-2RU
		Q3800 Chassis: 4 RU, accommodates 8 blades	QUCH-4RU
	Q3000 Blades	LC to MPO; 24 Duplex LC Ports (48 fiber) Distributed from 2 each 12 fiber MPO Connectors; OM3 Multimode	QUFB-48FDLCMM3HR
		MPO to MPO; 16 MPO ports with 12 fibers each (192 fibers); OM3/OM4	QUFB-192FMPOMMHR
Fiber Patch Panels; managed	Q4000 Chassis	Q4200 Chassis, accomodates 2EA Q4 series blades	QCH-1RU
		Q4400 Chassis, accomodates 4EA Q4 series blades	QCH-2RU
		Q4800 Chassis, accomodates 8EA Q4 series blades	QCH-4RU
	Q4000 Blades	LC-to-MPO Q4000 Chassis Blade; 24 Port Duplex LC; OM3	QFB-48FDLCMMMHR
		MPO-to-MPO Q4000 Chassis Blade; 16 Port MPO; OM3/OM4	QFB-192FMPOMMHR
	QCC-4; Chassis Controller for Q4000 Network Chassis		QCPU-MCB
	1 RU empty panel; accommodates 1 angle left and 1 angle right adapter packs		TFP-1TT00-000B
	2 RU empty panel; accommodates 2 angle left and 2 angle right adapter packs		TFP-2TT00-000B
	4 RU empty panel; accommodates 4 angle left and 4 angle right adapter packs		TFP-4TT00-000B
	TFP MPO Cassettes	Loaded with 12 multimode LC (aqua) adapters to 2 MPO adapters (total 24 fiber terminations or 12 ports)	Angle left
Angle right			TFP-24MPRDQ2

MAIN DISTRIBUTION AREA

Description			Part Number	
RMG Chassis	1 RU Empty panel; Accommodates 3 modular adapter packs; Black		RMG-1000-000B	
	2 RU Empty panel; Accommodates 6 modular adapter packs; Black		RMG-2000-000B	
	4 RU Empty panel; Accommodates 12 adapter packs; includes cable management bracket		RMG-4000-000B	
RMG MPO Cassette	Loaded with 3 Multimode quad LC adapters to 1 MPO adapter (total 12 fiber terminations or 6 ports)		RMG-12MPODQ4	
	Loaded with 6 Multimode quad LC adapters to 2 MPO adapter (total 12 fiber terminations or 6 ports)		RMG-24MPODQ4	
Storage Area Management System (SAM)	SAM Rack Mount Optical Fiber Enclosures	Rack Mount Patch Enclosure, 2 RU	1553761-1	
	Far End Enclosures; 1 RU	32-port OM3	1553533-2	
		48-port OM3	1553533-1	
	Hydra Kits; XG OM3 Multimode	32-port	2193057-2	
		48-port	2193057-3	
		64-port	2193057-4	
	MPO to MPO Trunk Cable Assemblies XG OM3	9 meter (30')	1553534-3	
		12 meter (40')	1553534-4	
		15 meter (50')	1553534-5	
		18 meter (60')	1553534-6	
	Pre-terminated Fiber Cable Assemblies; MPO 12 Fiber Trunks (OFNP)	5.5 mm Round Plenum 50/125 Micron laser optimized to 300 meters	10' (3.05 m)	MRM-AF/AFEG010F
			50' (15.25 m)	MRM-AF/AFEG050F
100' (30.48 m)			MRM-AF/AFEG100F	
3 mm Round Plenum 50/125 Micron laser optimized to 300 meters		10' (3.05 m)	MRM-AF/AFJG010F	
		50' (15.25 m)	MRM-AF/AFJG050F	
		100' (30.48 m)	MRM-AF/AFJG100F	
Pre-terminated Fiber Cable Assemblies; MPO 24 Fiber Trunks (OFNP)	5.5 mm Round Plenum 50/125 Micron laser optimized to 300 meters	10' (3.05 m)	MRM-AF/AFEJ010F	
		50' (15.25 m)	MRM-AF/AFEJ050F	
		100' (30.48 m)	MRM-AF/AFEJ100F	
	3 mm Round Plenum 50/125 Micron laser optimized to 300 meters	10' (3.05 m)	MRM-AF/AFMP010F	
		50' (15.25 m)	MRM-AF/AFMP050F	
		100' (30.48 m)	MRM-AF/AFMP100F	
Fiber Patch Cords; 10 GbE, 2 mm zipcord LC-LC connectors	OM4 LC Duplex to LC Duplex multimode ONFR,	1 meter	PAT-LCLC-R40C001M	
		2 meters	PAT-LCLC-R40C002M	
		3 meters	PAT-LCLC-R40C003M	
		5 meters	PAT-LCLC-R40C005M	
		10 meters	PAT-LCLC-R40C0010M	
	OM3 LC Duplex to LC Duplex multimode OFNR	1 meter	PAT-LCLC-R30C001M	
		2 meters	PAT-LCLC-R30C002M	
		3 meters	PAT-LCLC-R30C003M	
		5 meters	PAT-LCLC-R30C005M	
		10 meters	PAT-LCLC-R30C0010M	

MAIN DISTRIBUTION AREA

Description			Part Number
COPPER			
Copper Patch Panels and Cassettes; unmanaged	Cat 6A AMP-TWIST Shielded Panel	24-port straight	1933319-2
		48-port straight	1933320-2
	Cat 6A Unshielded	24-port dynamic angled	PP24AC6AT
		48-port dynamic angled	PP48AC6AT
	6A Shielded, Cat 6	SIGMA-Link patch panel	1-1671215-1
	Cat 6 SL Patch Panel Unshielded	24-port straight	1375014-2
		48-port straight	1375015-2
	10 GbE Unshielded	10G MRJ21 patch panels and cassettes	2153049-1
Copper Patch Panels; managed	GbE Unshielded	MRJ21 48-port panel	1435971-1
	Category 6 Unshielded	24-port AMPTRAC	1933327-1
		24-port AMPTRAC angled	1933329-1
		48-port AMPTRAC	1933328-1
		48-port AMPTRAC angled	1933330-1
	Category 6A Shielded	24-port AMPTRAC	1933331-1
		24-port AMPTRAC angled	1933333-1
		48-port AMPTRAC	1933332-1
		48-port AMPTRAC angled	1933334-1
	(10/100/1000BASE-T)	48-port	1777041-1
		48-port angled	1777053-1
	1152-port Analyzer		1-1591360-1
	24-port Scanning Module		1-1591363-0
	Q2324 Network Panel; 24-port (1 RU) network panel	with Cat 6A U/UTP jacks	QCPP-24MC6AU
		with Cat 6A STP jacks	QCPP-24MC6AS
		with Cat 6 U/UTP jacks	QCPP-24MC6U
	Q2348 Network Panel; 48-port (2 RU) network panel	with Cat 6A U/UTP jacks	QCPP-48MC6AU
		with Cat 6A STP jacks	QCPP-48MC6AS
		with Cat 6 U/UTP jacks	QCPP-48MC6U
Panel Controller	QPC-2 Panel controller for Q2000 Network Panels		QCPU-MPPM
Copper Jacks	6A Shielded, without dust covers	Cat 6A AMP-TWIST 6A Shielded	1711342-2
	6A Unshielded, TrueNet	Cat 6A AMP-TWIST 6A Unshielded	6830 1 835-XX*
	6 Unshielded, without dust covers	SL Series Cat 6 jacks	1375055-X*
Pre-terminated Copper Cable Assemblies	10 GbE Shielded	10G MRJ21 to 10G MRJ21	2111521-X [°]
	Cat 6A Shielded	10G SIGMA-Link	2111250-X [°]
	Cat 6 Unshielded	SIGMA-Link	2111290-X [°]
	1 GbE	MRJ21 to MRJ21	1499515-X [°]
		MRJ21 to 6 RJ45	1499520-X [°]
		Ultra Slim MRJ21 to MRJ21	1933960-X [°]

X* and XX* denotes color
X[°] denotes patch cord length
See key on page 18 for details.

MAIN DISTRIBUTION AREA

Description	Part Number		
Copper Patch Cords	Cat 6A Shielded	Cat 6A F/UTP SlimLine Patch Cords	1933882-X ^o
	Cat 6A Unshielded	TrueNet UTP Patch Cords	6645-2-825-X ^o
	Cat 6 Unshielded	Cat 6 U/UTP SlimLine Patch Cords	1933118-X ^o

ACCESSORIES (Fiber and Copper)

FiberGuide Fiber Raceway; Black	Horizontal straight section (6')	4x4 system	FGSB-MSHS-A
		4x6 system	FGSB-MSHS-B
		4x12 system	FGSB-MSHS-F
		4x24 system	FGSB-MSHS-H
	4-Inch Express Exit Unit, base with base cover.		FGSB-MEXP-E-A/B/F
	Island-T with single 12		FGSB-ISLAND-H/F
	Snap-fit junction	4x4 system	FGSB-MFAW-A
		4x6 system	FGSB-MFAW-B
		4x12 system	FGSB-MFAW-F
		4x24 system	FGSB-MFAW-H
Fiber Rack; Q Frame	19-Inch, requires rack 1933559-1	Q-Frame rack kit	Q-OFX-V
		Channel rack	ADCRACKBLK73
	End guard kit	Left	Q-OFX-GL
		Right	Q-OFX-GR
Equipment Rack; 19"	2 post, 3" deep, 2 Post Rack		1933559-1
	4 post adjustable, 4 Post Rack		1933570-1
Copper Cable Management	Horizontal 2U Panel	Single Sided	1933532-1
		Double Sided	1933533-1
	Double-sided vertical manager	6"	1933534-1
		6" Combination	1933540-1
TFP Standard Adapter Packs	12 Multimode LC (Aqua) adapters (24 terminations)	Angle Left	TFP-24APLQ2
		Angle Right	TFP-24APRQ2
	12 Singlemode LC/UPC (Blue) adapters (24 terminations)	Angle Left	TFP-24APLQ5
		Angle Right	TFP-24APRQ5
RMG Multimode Adapter Only Packs	LC Quad adapters, aqua color, 6 adapters or 24 fiber ports per adapter pack		RMG-24ADPQ4
	LC Quad adapters, aqua color, 6 adapters or 12 fiber ports per adapter pack		RMG-12ADPQ2

X* and XX* denotes color

X^o denotes patch cord length

See key on page 18 for details.

See page 17 for more information regarding bulk cable and connectors.

HORIZONTAL DISTRIBUTION AREA

The horizontal distribution area serves as the distribution point for horizontal cabling and houses cross-connects and equipment for delivering cable to the Equipment Distribution Area. TE solutions offer the ability to manage both copper and fiber within the same environment, allowing maximum flexibility in the architectures that can be deployed.



Fiber Cable



MRJ21 Patch Panel



Fiber Panels



SIGMA-Link



Shielded and Unshielded Copper Systems for 10 Gigabit Ethernet Applications



FiberGuide Optical Raceway

Description	Part Number		
COPPER			
Copper Patch Panels and Cassettes	Cat 6A AMP-TWIST Shielded Panel	24-Port Straight	1933319-2
		48-Port Straight	1933320-2
	Cat 6A Unshielded	24-port dynamic angled	PP24AC6AT
		48-port dynamic angled	PP48AC6AT
	6A Shielded, Cat 6	SIGMA-link Patch Panel	1-1671215-1
	10 GbE unshielded	10G MRJ21 Patch Panels and cassettes	2153049-1
	Cat 6 SL Patch Panel Unshielded	24-Port Straight	1375014-2
		48-Port Straight	1375015-2
	GbE unshielded	MRJ21 48-port panel	1435971-1
Copper Patch Panels; managed	Q2324 Network Panels 24-port (1 RU)	with Cat 6A U/UTP jacks	QCPP-24MC6AU
		with Cat 6A STP jacks	QCPP-24MC6AS
		with Cat 6 U/UTP jacks	QCPP-24MC6U
	Q2348 Network Panels 48-port (2 RU)	with Cat 6A U/UTP jacks	QCPP-48MC6AU
		with Cat 6A STP jacks	QCPP-48MC6AS
		with Cat 6 U/UTP jacks	QCPP-48MC6U
Panel Controller	QPC-2 Panel controller for Q2000 Network Panels		QCPU-MPPM
Copper Jacks	6A Shielded, without dust covers	Cat 6A AMP-TWIST 6A Shielded	1711342-2
	6A Unshielded, TrueNet	Cat 6A AMP-TWIST 6A Unshielded	6830 1 835-XX*
	6 Unshielded, without dust covers	SL Series Cat 6 jacks	1375055-X*
Pre-terminated Copper Cable Assemblies	XG Shielded	10G MRJ21 to 10G MRJ21	2111521-X ^o
	Cat 6A Shielded	10G SIGMA-Link	2111250-X ^o
	Cat 6 Unshielded	SIGMA-Link	2111290-X ^o
	1 GbE	MRJ21 to MRJ21	1499515-X ^o
		MRJ21 to 6 RJ45	1499520-X ^o
		Ultra Slim MRJ21 to MRJ21	1933960-X ^o
Copper Patch Cords	6A Shielded	Cat 6A F/UTP SlimLine Patch Cords	1933882-X ^o
	6A Unshielded	TrueNet UTP Patch Cords	6645-2-825-X ^o
	6 Unshielded	Cat 6 U/UTP SlimLine Patch Cords	1933118-X ^o

HORIZONTAL DISTRIBUTION AREA

Description	Part Number		
Q2000 Chassis and Blades	Q2324 Network Panels 24-port (1 RU)	with Cat 6A U/UTP jacks	QCPP-24MC6AU
		with Cat 6A STP jacks	QCPP-24MC6AS
		with Cat 6 U/UTP jacks	QCPP-24MC6U
	Q2348 Network Panels 48-port (2 RU)	with Cat 6A U/UTP jacks	QCPP-48MC6AU
		with Cat 6A STP jacks	QCPP-48MC6AS
		with Cat 6 U/UTP jacks	QCPP-48MC6U

FIBER

Fiber Patch Panels; unmanaged	Q3000 Chassis	Q3200 Chassis: 1 RU, accommodates 2 blades	QUCH-1RU
		Q3400 Chassis: 2 RU, accommodates 4 blades	QUCH-2RU
		Q3800 Chassis: 4 RU, accommodates 8 blades	QUCH-4RU
	Q3000 Blades	LC to MPO; 24 Duplex LC Ports (48 fiber) Distributed from 2 each 12 fiber MPO Connectors; OM3 Multimode	QUFB-48FDLCMM3HR
		MPO to MPO; 16 MPO ports with 12 fibers each (192 fibers); OM3/OM4	QUFB-192FMPOMMHR
Fiber Patch Panels; managed	Q4000 Chassis	Q4200 Chassis, accomodates 2EA Q4 series blades	QCH-1RU
		Q4400 Chassis, accomodates 4EA Q4 series blades	QCH-2RU
		Q4800 Chassis, accomodates 8EA Q4 series blades	QCH-4RU
	Q4000 Blades	LC-to-MPO Q4000 Chassis Blade; 24 Port Duplex LC; OM3	QFB-48FDLCMMMHR
		MPO-to-MPO Q4000 Chassis Blade; 16 Port MPO; OM3/OM4	QFB-192FMPOMMHR
	1 RU empty panel; accommodates 1 angle left and 1 angle right adapter packs		TFP-1TT00-000B
	2 RU empty panel; accommodates 2 angle left and 2 angle right adapter packs		TFP-2TT00-000B
	4 RU empty panel; accommodates 4 angle left and 4 angle right adapter packs		TFP-4TT00-000B
	TFP MPO Cassettes	Loaded with 12 multimode LC (aqua) adapters to 2 MPO adapters (total 24 fiber terminations or 12 ports)	Angle left TFP-24MPLDQ2
			Angle right TFP-24MPRDQ2
RMG Chassis	1 RU Empty panel; Accommodates 3 modular adapter packs; Black		RMG-1000-000B
	2 RU Empty panel; Accommodates 6 modular adapter packs; Black		RMG-2000-000B
	4 RU Empty panel; Accommodates 12 adapter packs; includes cable management bracket		RMG-4000-000B
RMG MPO Cassette	Loaded with 3 Multimode quad LC adapters to 1 MPO adapter (total 12 fiber terminations or 6 ports)		RMG-12MPODQ4
	Loaded with 6 Multimode quad LC adapters to 2 MPO adapter (total 12 fiber terminations or 6 ports)		RMG-24MPODQ4

HORIZONTAL DISTRIBUTION AREA

Description			Part Number
Pre-terminated Fiber Cable Assemblies; MPO 24 Fiber Trunks (OFNP)	5.5 mm Round Plenum 50/125 Micron laser optimized to 300 meters	10' (3.05 m)	MRM-AF/AFEJ010F
		50' (15.25 m)	MRM-AF/AFEJ050F
		100' (30.48 m)	MRM-AF/AFEJ100F
	3 mm Round Plenum 50/125 Micron laser optimized to 300 meters	10' (3.05 m)	MRM-AF/AFMP010F
		50' (15.25 m)	MRM-AF/AFMP050F
		100' (30.48 m)	MRM-AF/AFMP100F
Pre-terminated Fiber Cable Assemblies; MPO 12 Fiber Trunks (OFNP)	5.5 mm Round Plenum 50/125 Micron laser optimized to 300 meters	10' (3.05 m)	MRM-AF/AFEG010F
		50' (15.25 m)	MRM-AF/AFEG050F
		100' (30.48 m)	MRM-AF/AFEG100F
	3 mm Round Plenum 50/125 Micron laser optimized to 300 meters	10' (3.05 m)	MRM-AF/AFJG010F
		50' (15.25 m)	MRM-AF/AFJG050F
		100' (30.48 m)	MRM-AF/AFJG100F
Fiber Patch Cords; 10 GbE, 2 mm zipcord LC-LC connectors	OM4 LC Duplex to LC Duplex multimode ONFR,	1 meter	PAT-LCLC-R40C001M
		2 meters	PAT-LCLC-R40C002M
		3 meters	PAT-LCLC-R40C003M
		5 meters	PAT-LCLC-R40C005M
		10 meters	PAT-LCLC-R40C0010M
	OM3 LC Duplex to LC Duplex multimode OFNR	1 meter	PAT-LCLC-R30C001M
		2 meters	PAT-LCLC-R30C002M
		3 meters	PAT-LCLC-R30C003M
		5 meters	PAT-LCLC-R30C005M
		10 meters	PAT-LCLC-R30C0010M

ACCESSORIES (Fiber and Copper)

FiberGuide Fiber Raceway; Black	Horizontal straight section (6')	4x4 system	FGSB-MSHS-A
		4x6 system	FGSB-MSHS-B
		4x12 system	FGSB-MSHS-F
		4x24 system	FGSB-MSHS-H
	4-Inch Express Exit Unit, base with base cover		FGSB-MEXP-E-A/B/F
	Island-T with single 12		FGSB-ISLAND-H/F
	Snap-fit junction	4x4 system	FGSB-MFAW-A
		4x6 system	FGSB-MFAW-B
		4x12 system	FGSB-MFAW-F
		4x24 system	FGSB-MFAW-H
Equipment Rack; 19"	2 post, 3" deep, 2 post rack		1933559-1
	4 post adjustable, 4 post rack		1933570-1
Equipment Rack; Q Frame	19-inch	Q-Frame rack kit	Q-OFX-V
		Channel rack	ADCRACKBLK73
	End guard kit	Left	Q-OFX-GL
		Right	Q-OFX-GR
Copper Cable Management	Horizontal 2U Panel	Single Sided	1933532-1
		Double Sided	1933533-1
	Double-Sided Vertical Manager	6"	1933534-1
		6" Combination	1933540-1

X* and XX* denotes color
X⁰ denotes patch cord length
See key on page 18 for details.

EQUIPMENT DISTRIBUTION AREA

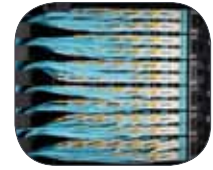
Serving as the home to both storage area network and local area network equipment, space in the equipment distribution area is at a premium. And, due to virtualization, today's data centers require more components in less space than ever before. This drives the need for high-density interconnect solutions like TE's Q-Frame as well as versatile cable management solutions, like FiberGuide, to manage cable along the row.



Fiber Cable



MRJ21 Patch Panel



Fiber Panels



SIGMA-Link



Shielded and Unshielded Copper Systems for 10 Gigabit Ethernet Applications



FiberGuide Optical Raceway

Description			Part Number
COPPER			
Copper Patch Panel and Cassettes	Cat 6A AMP-TWIST Shielded	24-Port straight	1933319-2
		48-Port straight	1933320-2
	Cat 6A Unshielded	24-port dynamic angled	PP24AC6AT
		48-port dynamic angled	PP48AC6AT
	6A Shielded, Cat 6	SIGMA-Link	1-1671215-1
	10 GbE unshielded	10G MRJ21	2153049-1
	Cat 6 SL unshielded	24-Port straight	1375014-2
		48-Port straight	1375015-2
GbE unshielded	MRJ21 48-port panel	1435971-1	
Copper Patch Panels; managed	Q2324 Network Panels 24-port (1 RU)	with Cat 6A U/UTP jacks	QCPP-24MC6AU
		with Cat 6A STP jacks	QCPP-24MC6AS
		with Cat 6 U/UTP jacks	QCPP-24MC6U
	Q2348 Network Panels 48-port (2 RU)	with Cat 6A U/UTP jacks	QCPP-48MC6AU
		with Cat 6A STP jacks	QCPP-48MC6AS
		with Cat 6 U/UTP jacks	QCPP-48MC6U
Copper Jacks	6A Shielded (without dust covers)	Cat 6A AMP-TWIST 6A Shielded	1711342-2
	6A Unshielded, TrueNet	Cat 6A AMP-TWIST 6A Unshielded	6830 1 835-XX
	6 Unshielded (without dust covers)	SL Series Cat 6 jacks	1375055-X
Copper Patch Cords	6A Shielded	Cat 6A F/UTP SlimLine	1933882-X ^o
	6A Unshielded	TrueNet UTP	6645-2-825-X ^o
	6 Unshielded	Cat 6 U/UTP SlimLine	1933118-X ^o
Pre-terminated Copper Cable Assemblies	10 GbE Shielded	10G MRJ21 to 10G MRJ21	2111521-X ^o
	Cat 6A Shielded	10G SIGMA-Link	2111250-X ^o
	Cat 6 Unshielded	SIGMA-Link	2111290-X ^o
	1 GbE	MRJ21 to MRJ21	1499515-X ^o
		MRJ21 to 6 RJ45	1499520-X ^o
		Ultra Slim MRJ21 to MRJ21	1933960-X ^o

X* and XX* denotes color
X^o denotes patch cord length
See key on page 18 for details.

EQUIPMENT DISTRIBUTION AREA

Description	Part Number		
Q2000 Network Panels; managed	Q2324 Network Panels 24-port (1 RU)	with Cat 6A U/UTP jacks	QCPP-24MC6AU
		with Cat 6A STP jacks	QCPP-24MC6AS
		with Cat 6 U/UTP jacks	QCPP-24MC6U
	Q2348 Network Panels 48-port (2 RU)	with Cat 6A U/UTP jacks	QCPP-48MC6AU
		with Cat 6A STP jacks	QCPP-48MC6AS
		with Cat 6 U/UTP jacks	QCPP-48MC6U

FIBER

Fiber Patch Panels; unmanaged	Q3000 Chassis	Q3200 Chassis: 1 RU, accommodates 2 blades	QUCH-1RU
		Q3400 Chassis: 2 RU, accommodates 4 blades	QUCH-2RU
		Q3800 Chassis: 4 RU, accommodates 8 blades	QUCH-4RU
	Q3000 Blades	LC to LC; 24 Duplex LC Ports (48 fiber); OM3/OM4 Multimode	QUFB-48FDLCLMMHR
		LC to MPO; 24 Duplex LC Ports (48 fiber) Distributed from 2ea 12 fiber MPO Connectors; OM3 Multimode	QUFB-48FDLCMM3HR
		MPO to MPO; 16 MPO ports with 12 fibers each (192 fibers); OM3/OM4	QUFB-192FMPOMMHR
Fiber Patch Panels; managed	Q4000 Chassis	Q4200 Chassis, accomodates 2EA Q4 series blades	QCH-1RU
		Q4400 Chassis, accomodates 4EA Q4 series blades	QCH-2RU
		Q4800 Chassis, accomodates 8EA Q4 series blades	QCH-4RU
	Q4000 Blades	LC-to-MPO Q4000 Chassis Blade; 24 Port Duplex LC; OM3	QFB-48FDLCMMMHR
		MPO-to-MPO Q4000 Chassis Blade; 16 Port MPO; OM3/OM4	QFB-192FMPOMMHR
	QCC-4; Chassis Controller for Q4000 Network Chassis		QCPU-MCB
	TFP Chassis	1 RU empty panel, black; accommodates 1 angle left and 1 angle right adapter packs	TFP-1TT00-000B
		2 RU empty panel, black; accommodates 2 angle left and 2 angle right adapter packs	TFP-2TT00-000B
		4 RU empty panel, black; accommodates 4 angle left and 4 angle right adapter packs	TFP-4TT00-000B
	TFP MPO Cassettes	Loaded with 12 multimode LC (aqua) adapters to 2 MPO adapters (total 24 fiber terminations or 12 ports)	Angle left TFP-24MPLDQ2
			Angle right TFP-24MPRDQ2
RMG Chassis	1 RU Empty panel; Accommodates 3 modular adapter packs; Black		RMG-1000-000B
	2 RU Empty panel; Accommodates 6 modular adapter packs; Black		RMG-2000-000B
	4 RU Empty panel; Accommodates 12 adapter packs; includes cable management bracket		RMG-4000-000B
RMG MPO Cassette	RMG MPO Cassette, loaded with 3 multimode quad LC adapters to 1 MPO adapter (total 12 fiber terminations or 6 ports)		RMG-12MPODQ4
	RMG MPO Cassette, loaded with 6 multimode quad LC adapters to 2 MPO adapter (total 12 fiber terminations or 6 ports)		RMG-24MPODQ4

EQUIPMENT DISTRIBUTION AREA

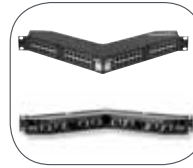
Description			Part Number
Pre-terminated Fiber Cable Assemblies; MPO 12 Fiber Trunks (OFNP)	5.5 mm Round Plenum 50/125 Micron laser optimized to 300 meters	10' (3.05 m)	MRM-AF/AFEG010F
		50' (15.25 m)	MRM-AF/AFEG050F
		100' (30.48 m)	MRM-AF/AFEG100F
	3 mm Round Plenum 50/125 Micron laser optimized to 300 meters	10' (3.05 m)	MRM-AF/AFJG010F
		50' (15.25 m)	MRM-AF/AFJG050F
		100' (30.48 m)	MRM-AF/AFJG100F
Pre-terminated Fiber Cable Assemblies; MPO 24 Fiber Trunks (OFNP)	5.5 mm Round Plenum 50/125 Micron laser optimized to 300 meters	10' (3.05 m)	MRM-AF/AFEJ010F
		50' (15.25 m)	MRM-AF/AFEJ050F
		100' (30.48 m)	MRM-AF/AFEJ100F
	3 mm Round Plenum 50/125 Micron laser optimized to 300 meters	10' (3.05 m)	MRM-AF/AFMP010F
		50' (15.25 m)	MRM-AF/AFMP050F
		100' (30.48 m)	MRM-AF/AFMP100F
Fiber Patch Cords; 10 GbE, 2 mm zipcord LC-LC connectors	OM4 LC Duplex to LC Duplex multimode ONFR,	1 meter	PAT-LCLC-R40C001M
		2 meters	PAT-LCLC-R40C002M
		3 meters	PAT-LCLC-R40C003M
		5 meters	PAT-LCLC-R40C005M
		10 meters	PAT-LCLC-R40C0010M
	OM3 LC Duplex to LC Duplex multimode OFNR	1 meter	PAT-LCLC-R30C001M
		2 meters	PAT-LCLC-R30C002M
		3 meters	PAT-LCLC-R30C003M
		5 meters	PAT-LCLC-R30C005M
		10 meters	PAT-LCLC-R30C0010M

ACCESSORIES (Fiber and Copper)

FiberGuide Fiber Raceway; Black	Horizontal straight section (6')	4x4 system	FGSB-MSHS-A
		4x6 system	FGSB-MSHS-B
		4x12 system	FGSB-MSHS-F
		4x24 system	FGSB-MSHS-H
	4-Inch Express Exit Unit, base with base cover		FGSB-MEXP-E-A/B/F
	Island-T with single 12		FGSB-ISLAND-H/F
	snap-fit Junction	4x4 system	FGSB-MFAW-A
		4x6 system	FGSB-MFAW-B
		4x12 system	FGSB-MFAW-F
		4x24 system	FGSB-MFAW-H
Equipment Rack; 19"	2 post, 3" deep, 2 Post Rack		1933559-1
	4 post adjustable, 4 Post Rack		1933570-1
Copper Cable Management	Horizontal 2U Panel	Single Sided	1933532-1
		Double Sided	1933533-1
	Double-Sided Vertical Manager	6"	1933534-1
		6" Combination	1933540-1
Equipment Rack; Q Frame	19-inch	Q-Frame rack kit	Q-OFX-V
		Channel rack	ADCRACKBLK73
	End guard kit	Left	Q-OFX-GL
		Right	Q-OFX-GR

BULK CABLE AND CONNECTORS

TE Connectivity's bulk cable and connectors are essential to meet the requirements of today's high speed data networks. TE, the world leader in pre-terminated fiber components, offers a wide array of connectors and patching solutions—all backed by the industry's most comprehensive warranty.



MRJ21 Patch Panel



Shielded and Unshielded Copper Systems for 10 Gigabit Ethernet Applications



Description		Part Number		
Bulk Fiber Cable	OS1 Singlemode optical fiber interconnect cable OFNP	6 Fiber	7-1553308-3	
		12 Fiber	7-1553312-3	
		24 Fiber	7-1553314-3	
	OS1 Singlemode optical fiber interconnect cable OFNR	12 Fiber	7-1553311-3	
		24 Fiber	3-1553313-9	
	Armored Cable	12 Fiber Armored Cable OM3 OFNP	3-1777117-7	
		12 Fiber Armored Singlemode	4-1777117-7	
Bulk Fiber Cable; 24 Fiber (OFNR and OFNP), XG OM3 and OM4 50/125 Multimode Optical Fiber Distribution Cable	XG OM3 Riser (OFNR)	24 Fibers/Unit	3-1553313-9	
		12 Fibers/Unit	3-1553315-9	
	XG OM3 Plenum (OFNP)	24 Fibers/Unit	3-1553314-9	
		12 Fibers/Unit	3-1553316-9	
	XG OM4 Riser (OFNR)	24 Fibers/Unit	4-1553313-9	
		12 Fibers/Unit	4-1553315-9	
	XG OM4 Plenum (OFNP)	24 Fibers/Unit	4-1553314-9	
		12 Fibers/Unit	4-1553316-9	
	Bulk Fiber Cable; 12 Fiber (OFNR and OFNP), XG OM3 and OM4 50/125 Multimode Optical Fiber Distribution Cable	XG OM3 Riser (OFNR)	12 Fibers/Unit	3-1553311-9
		XG OM3 Plenum (OFNP)	12 Fibers/Unit	3-1553312-9
XG OM4 Riser (OFNR)		12 Fibers/Unit	4-1553311-9	
XG OM4 Plenum (OFNP)		12 Fibers/Unit	4-1553312-9	
Bulk Fiber Cable; 6 Fiber (OFNR and OFNP), XG OM3 and OM4 50/125 Multimode Optical Fiber Distribution Cable	XG OM3 Riser (OFNR)	6 Fibers/Unit	3-1553307-9	
	XG OM3 Plenum (OFNP)	6 Fibers/Unit	3-1553308-9	
	XG OM4 Riser (OFNR)	6 Fibers/Unit	4-1553307-9	
	XG OM4 Plenum (OFNP)	6 Fibers/Unit	4-1553308-9	
Bulk Copper Cable	6A Shielded	Cat 6A F/UTP plenum	1499416-X	
		Cat 6A F/UTP riser	1499389-X	
	6A Unshielded	Cat 6A U/UTP plenum	10G-A6TP-XX02	
		Cat 6A U/UTP riser	10G-A6TR-XX02	
	6 Unshielded	Cat 6 UTP plenum	219567-X	
		Cat 6 UTP riser	219560-X	

BULK CABLE AND CONNECTORS

Description		Part Number	
24 Fiber (OFNR and OFNP); XG OM3 and OM4 50/125 multimode optical fiber distribution cable	XG OM3 riser (OFNR)	24 fibers/unit	3-1553313-9
		12 fibers/unit	3-1553315-9
	XG OM3 plenum (OFNP)	24 fibers/unit	3-1553314-9
		12 fibers/unit	3-1553316-9
	XG OM4 riser (OFNR)	24 fibers/unit	4-1553313-9
		12 fibers/unit	4-1553315-9
	XG OM4 plenum (OFNP)	24 fibers/unit	4-1553314-9
		12 fibers/unit	4-1553316-9
12 Fiber (OFNR and OFNP); XG OM3 and OM4 50/125 multimode optical fiber distribution cable	XG OM3 riser (OFNR)	12 fibers/unit	3-1553311-9
	XG OM3 plenum (OFNP)	12 fibers/unit	3-1553312-9
	XG OM4 riser (OFNR)	12 fibers/unit	4-1553311-9
	XG OM4 plenum (OFNP)	12 fibers/unit	4-1553312-9
OS1 Singlemode Optical Fiber Interconnect Cable OFNP	OFNP	6 fiber	7-1553308-3
		12 fiber	7-1553312-3
		24 fiber	7-1553314-3
	OFNR	12 fiber	7-1553311-3
		24 fiber	3-1553313-9
Armored Cable; 12 fiber armored cable		OM3 OFNP	3-1777117-7
		Singlemode	4-1777117-7
Fiber Connectors	10 GbE, TE LIGHT CRIMP PLUS LC, SC, Duplex SC, XG OM3 and OM4 multimode LIGHT CRIMP PLUS connectors	Duplex LC Clip, Package of 6	1754371-2
LIGHT CRIMP PLUS	XG		6754483-4
	LC, 50/125 XG	XG secure red	1985960-1
		XG secure yellow	1985960-2
		XG secure green	1985960-3
		XG secure blue	1985960-4

JACK COLORS AND PATCH CORD LENGTH

Jack Colors

X* denotes color:

1 = Almond	2 = Black	3 = White	4 = Gray	5 = Orange
6 = Blue	7 = Red	8 = Yellow	9 = Green	1—0 = Violet
1—1 = Electrical Ivory	1—3 = Alpine White			

XX* denotes color:

01 = White	02 = Ivory	03 = Gray	04 = Black	05 = Red
06 = Blue	07 = Green	08 = Yellow	09 = Purple	10 = Orange
22 = Electrical Ivory				

Patch Cord Length

X⁰ denotes Patch Cord length:

-3 = 3 ft	-5 = 5 ft	-7 = 7 ft	1--0 = 10 ft
1--2 = 12 ft	1--5 = 15 ft	2--0 = 20 ft	2--5 = 25 ft

