

product spotlight

ENHANCED NETWORKING (EN) ENCLOSURES

NO CORNER POSTS!
HIGH DENSITY VERTICAL CABLE
BUNDLES EASILY FIT IN THE OPEN
AREA AROUND MOUNTING RAILS.

FEATURES:

RAILS

- Two pairs of black powder coated, universal 19" #10-32 mounting rails with RMU marking; 3/8" sq. (M6) rails also available
- Front rails are fixed and recessed; Rear rails are fully adjustable
- Designed with a Flexible Mounting Profile (FMP), a series of holes along each rail that falls outside of the mounting profile; allows mounting of power strips, cable management, patch panels, etc.

POWER & GROUNDING

- PDU mounting brackets that allow button mounting of major industry PDUs
- Optional zero RMU mounting brackets allow vertical mounting of 19" power strips
- Grounding kit with quick disconnect wires are included with each EN configuration

CABLE MANAGEMENT "FINGERS"

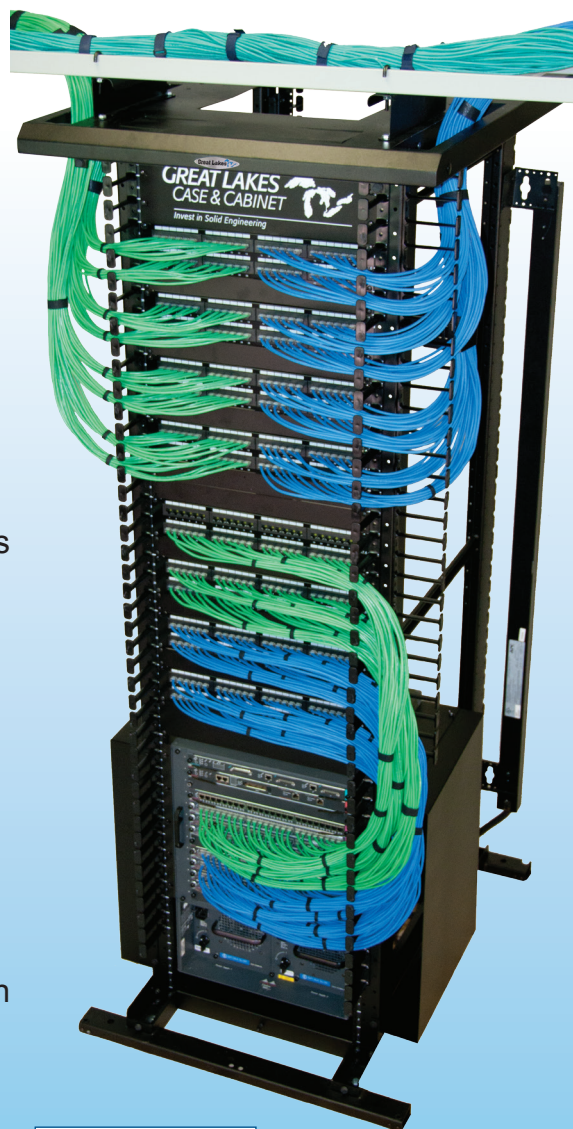
- Fingers (made up of 7 RMU sections) are pre-installed on all rails and align with RMUs for clean cable pathways
- Additional kits (or single finger sections) are available

ADDITIONAL CABLE MANAGEMENT

- Large top knockouts for top cable access
- Additional kits (or single finger sections) are available

Optional accessories include:

- 19" cable organizers
- Overhead cable accessories, including troughs and ladder rack brackets
- Horizontal cable manager for front to rear cables

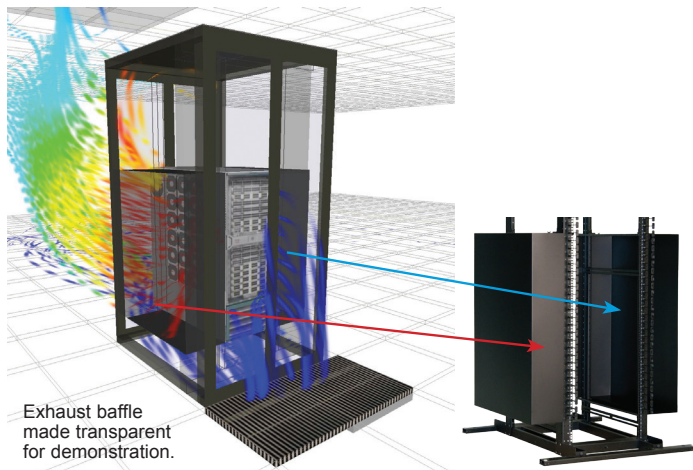


To find detailed explanations
of Great Lakes EN Enclosure
Visit: <https://goo.gl/d1zmXT>



WeRackYourWorld.com

COOLING OPTIONS



- Filler panels and brush grommet kits to prevent bypass airflow within the enclosure
- Baffle Kits create proper airflow for switches, and side-to-side airflow equipment, as suggested by manufactures such as Cisco. Cool air is channeled into the equipment along the right side and exhaust air is directed out along the left side. Kits are tool-less and easily attach to rails outside of EIA mounting profile.

ENCLOSURE CONFIGURATIONS

EN Enclosures are available in three configurations: as a complete enclosure, with doors only, and just a frame. Parts and specs listed below are for enclosures with doors (side panels not included) ; configuration includes: EN frame with two pairs of #10-32 rails; 8 adjustable levelers; solid top panel; mesh front door and split mesh rear door on 32"W enclosures (split mesh front and rear doors on 40"W enclosures), and grounding kit.

Part No.	H	W	D	RMU
GL910ENT-3242MSS-NS	91"	32"	42"	48
GL910ENT-3248MSS-NS	91"	32"	48"	48
GL910ENT-4042SSS-NS	91"	40"	42"	48
GL910ENT-4048SSS-NS	91"	40"	48"	48
GL840ENT-3242MSS-NS	84"	32"	42"	45
GL840ENT-3248MSS-NS	84"	32"	48"	45
GL840ENT-4042SSS-NS	84"	40"	42"	45
GL840ENT-4048SSS-NS	84"	40"	48"	45
GL780ENT-3242MSS-NS	78"	32"	42"	42
GL780ENT-3248MSS-NS	78"	32"	48"	42
GL780ENT-4042SSS-NS	78"	40"	40"	42
GL780ENT-4048SSS-NS	78"	40"	48"	42

For enclosures with 3/8" sq. (M6) rails, remove 'T' from part number. Front rails are fixed and recessed (6.5" in 42"D enclosures; 8" in 48"D enclosures). 42"D enclosures have maximum rail spacing of 29"; 48"D enclosures have maximum rail spacing of 32"
For additional configurations, please visit WeRackYourWorld.com

GANGED ENCLOSURE



EN Enclosures are designed so that the front doors open to the left or right. When two enclosures are ganged together, doors can open in opposite directions, creating a large space where cables are easily accessible and able to be routed up, down, or to the next enclosure.

CORPORATE HEADQUARTERS

P.O. Box 551
Edinboro, PA 16412
1.866.TRY.GLCC
(1.866.879.4522)
Phone: 814.734.7303
Fax: 814.734.3907
glcc@greatcabinets.com

GREAT LAKES MANUFACTURING, INC.

1521 Enterprise Road
Corry, PA 16407
Phone: 814.734.2436
Fax: 814.665.7025
werackyourworld.com
glm@greatmanufacturing.net

WESTERN DISTRIBUTION

4750 Joule Street
Reno, NV 89502
Phone: 775.829.9913
Fax: 775.829.9926
glcc@greatcabinets.com

SOUTHEAST DISTRIBUTION

3630 Shaw Blvd.
Suite 4, Naples, FL. 34117
Phone: 1.866.TRY.GLCC
Fax: 239.304.1226
glcc@greatcabinets.com

GREAT LAKES INTERNATIONAL LTD.

Aerbridge House, Unit 14
Dunshaughlin Business Park
Dunshaughlin Co. Meath
Ireland
Phone: 011 353 1 825 8777
Fax: 011 353 1 825 8778

GREAT LAKES HUNGARY KFT

Zsurló utca 13
8000 Székesfehérvár
Hungary
Phone: 011 36 22 880 420
Fax: 011 36 22 880 429