

MegaView® 2 Megapixel Bullet IP Cameras

1.2–10MP H.264 All-in-One Motorized P-Iris Lens True Day/Night IR Indoor/Outdoor Bullet-Style IP Cameras with Wide Dynamic Range (WDR) and STELLAR™ Low Light Models



Telephoto Lens

Wide Angle Lens

Junction Box Included



Wide Field of View

Telephoto Field of View

All-in-One Solutions – MegaView® 2

MegaView® 2 multi-megapixel cameras provide ample resolution to zoom-in for details in live or recorded video. These indoor/outdoor all-in-one solutions integrate a 1.2-, 1080p, 3-, 5-, or 10-megapixel camera with fast frame rates and an IR corrected motorized wide angle or telephoto, P-iris lens into an IP66 environmental rated, tamper-resistant bullet-style housing. H.264 compression reduces bandwidth and storage requirements while delivering full frame rates and full resolution without sacrificing image quality.



Integrated Motorized Lens
with Remote Focus and Zoom



P-Iris Control for
Best Depth of Field
and Image Clarity



Wide Dynamic Range
Available on AV2226
AV3226 Models



Dual Mode: 1080p/10MP
on 10MP Models



STELLAR™
Low Light Technology
on 1.2MP Models



Wide Angle or Telephoto
Lens Option



IR LEDs



Weather Resistant
IP66 Rated



True Day/Night
with IR Cut Filter



All-in-One Bullet-Style
Solution



Pixel Binning
Mode on 3, 5, and
10MP Models



CorridorView™
with 90° Image Flip
(-S Models)



SDHC Card Slot
(-S Models)



Dual Encoder
H.264/MJPEG



Casino Mode™
Maintains at Least 30fps
on 1080p Models



Audio Input/Output
(-A Models)

MegaView® 2 Megapixel Bullet IP Cameras

Highlighted Features:

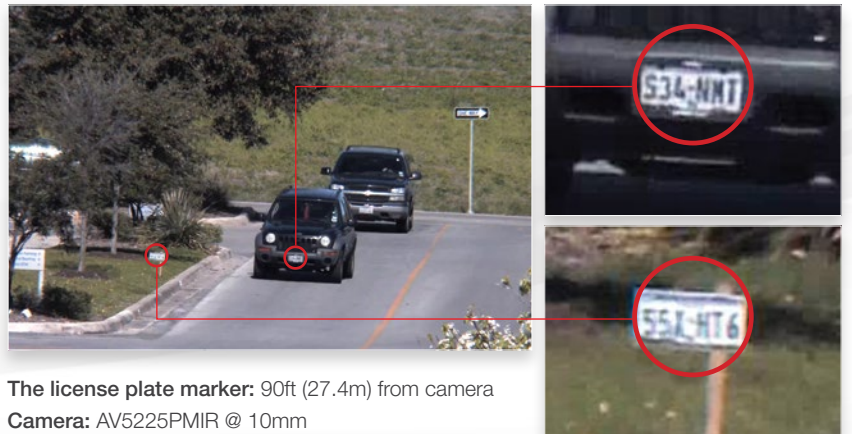
- 1.2–10 Megapixel Models
- Remote Focus/Zoom Motorized P-Iris Lens
- P-Iris Control to Get Best Depth of Field and Image Clarity
- Wide Angle or Telephoto Lens Options
- STELLAR™ Low Light Technology Reduces Motion Blur, Noise and Storage Requirements, While Enhancing Contrast and Allowing Color Imaging in Near Complete Darkness on 1.2MP Models
- Optional True WDR up to 100dB at Full Resolution Available on Some 1080p and 3MP Models: See Clearly in Shaded and Bright Light Conditions Simultaneously
- True Day/Night Functionality with Mechanical IR Cut Filter and IR LEDs
- Binning Mode for Strong Low Light Performance on 3MP, 5MP and 10MP Cameras
- Casino Mode™ Guarantees Continuous 30fps Frame Rate Required by Gaming Industry Regulations (AV2225 Models)
- CorridorView™ Allows 90° Image Rotation for Better Coverage in Hallways and Corridors (-S Models)
- Privacy Mask, Motion Detection, Flexible Cropping, Bit Rate Control, Multi-Streaming, Forensic Zooming and Non-Integer Scaling
- Dual Encoder H.264/MJPEG
- Fast Frame Rates
- SDHC Card Slot for Onboard Storage (-S Models)
- Total PoE Solution (No External Power Required for IR LEDs), PoE and Auxiliary Power: 12–48V DC/24V AC
- Outdoor Rated IP66 and Tamper-Resistant Housing
- Easily Adjustable 3-Axis Wall Mount, Junction Box Included
- Optional Audio
- ONVIF Profile S and PSIA Conformant
- User-Friendly Web Interface
- Made in the USA



Increased Resolution for Forensic Zooming

Arecont Vision MegaView® 2 cameras allow you to choose the level of resolution you need. In applications where extreme detail is required, such as license plate or face recognition, a higher resolution camera can be selected to ensure sufficient pixel density is delivered.

Because megapixel images have a greater number of pixels than VGA images, MegaView® 2 cameras allow users to view up-close details in live or recorded video at any time without compromising overall surveillance—an added benefit not possible with conventional PTZ cameras.



The license plate marker: 90ft (27.4m) from camera
Camera: AV5225PMIR @ 10mm
Pixel density archived: 50PPF (164PPM)

STELLAR™ Technology and Enhanced Low Light Performance

MegaView® 2 now features a 1.2MP model with Spatio Temporal Low Light Architecture (STELLAR™) technology, which allows for color imaging in near complete darkness. Arecont Vision® STELLAR™ technology utilizes a patented noise reduction algorithm that reduces noise, motion blur, and bit rate and storage requirements. Along with adaptive contrast enhancement, MegaView® 2 with STELLAR™ has superior low light sensitivity, making it capable of covering areas where very little light is present.



Color Image without STELLAR™ Technology at .01 Lux



Color Image with STELLAR™ Technology at .01 Lux

In addition to STELLAR™ models, all MegaView® 2 camera models are equipped with True Day/Night operation, and MegaView® 2 cameras that are 3MP or higher include pixel binning to reduce noise. These functionalities along with integrated IR illumination provide a winning combination in complete darkness.

MegaDynamic® Wide Dynamic Range (WDR)



Megapixel image without WDR



Megapixel image with WDR

Users can achieve clear images in extreme lighting conditions with MegaView® 2 True WDR cameras in resolutions of 1080p and 3MP. Wide Dynamic Range up to 100dB at full resolution balances light and dark areas in the same scene, such as in the lobby of an office building with large windows, the loading dock at a distribution facility or many retail environments.

Remote Focus/Zoom and P-Iris

The MegaView® 2 series of all-in-one H.264 cameras combines megapixel resolution with remote focus, remote zoom, True Day/Night and P-iris capabilities. The cameras can be installed without locally adjusting the field of view or focus.

All lens operations can be remotely controlled from the head end to refine the field of view and focus of the scene. Short or full range focus scan functions analyze the local or full scene to determine the best focus for the chosen field of view.



Telephoto P-Iris Lens Option

MegaView® 2 cameras are available with motorized telephoto lenses, further boosting their flexibility as all-in-one bullet-style solutions. Telephoto lenses offer a broad optical range for every sensor resolution in the MegaView® 2 family.

These telephoto lenses feature P-iris technology to achieve the best image quality possible and offer remote focus / remote zoom for easy installation and maintenance.



| Optical Range Per Sensor | |
|--------------------------|---------|
| 1080p | 8-22mm |
| 1080p WDR | 8-22mm |
| 3MP | 8-22mm |
| 3MP WDR | 8-22mm |
| 5MP | 9-22mm |
| 10MP WDR | 12-22mm |

IR Illuminator Specifications

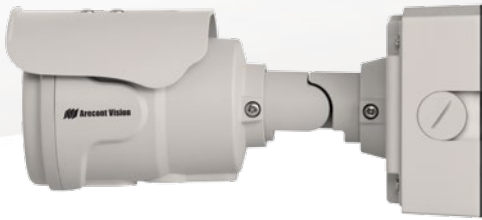
IR illuminators provide coverage in total darkness for a 24-hour solution.

| | PMIR | PMTIR |
|---------------|-------------|-------------|
| IR LEDs | 48 pcs | 4 pcs |
| IR Wavelength | 850nm | 850nm |
| IR Distance | 100ft (30m) | 200ft (60m) |
| IR Angle | 50° | 33° |



Total PoE Solution

No external power is needed for the IR LED ring.



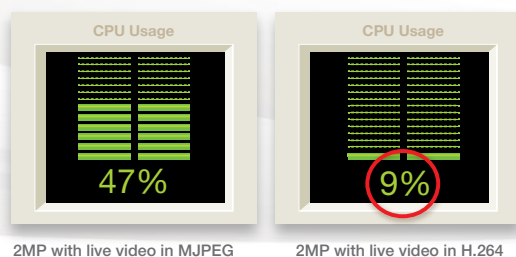
Junction Box Included

MegaView® 2 ships with its own junction box, simplifying both installation and the ordering process.

Compliant H.264 Compression

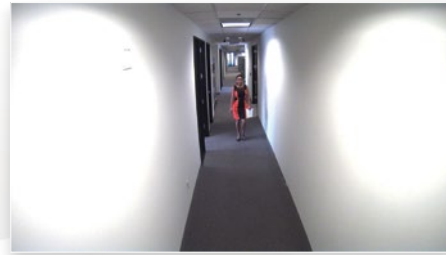
MegaView® 2's compliant implementation of H.264 allows full frame rates and full resolution without sacrificing image quality. With bit rate control, the CPU load is decreased at both the client (decompression) side and the server/storage side, allowing lower bandwidth and storage relative to MJPEG. Real Time Streaming Protocol (RTSP) allows for compatibility with media players such as Apple QuickTime®, VLC and others.

H.264 Decompression (example)

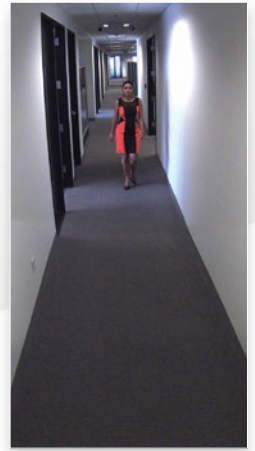


CorridorView™

With CorridorView™, MegaView® 2 can rotate or flip pixels in 90° increments. This works great for narrow hallways where pixels are often wasted capturing the surrounding walls.



Standard View



CorridorView™

Remote Focus/Zoom with User-Friendly Web Interface

For easy installation, remote focus and remote zoom can be done through the camera webpage. Just click "short range focus" or "full range focus" to get a clear image. The added P-iris functionality provides an automatic, precise iris control.

Additional Benefits Include:

- Fine tuning for a better image after installation
- Quicker installation
- Ability to choose wide or telephoto field of view depending on application requirements
- P-iris is designed to provide improvements in image quality and depth of field

Zoom & Focus

Zoom:

+20 +5 +1

-20 -5 -1

☒ Enable Auto Focus after zoom

Focus:

+20 +5 +1

-20 -5 -1

Full-range Focus

Short-range Focus

Stop

Focus Aid: 4495

Update Focus Aid

MegaView® 2 Megapixel Bullet IP Cameras

Product Comparison



| Model | Resolution | | Minimum Illumination | Lens | Max Frame Rate @ Full Resolution | Day/Night | STELLAR™ | WDR | Binning Mode | Remote Focus/Zoom | P-Iris Lens | Telephoto Lens Option | SDHC Card Option | IR LEDs | Audio Option |
|---------|------------|-------------|--|---|----------------------------------|-----------|----------|-----|--------------|-------------------|-------------|-----------------------|------------------|---------|--------------|
| AV1225 | 1.2MP | 1280 x 960 | Color: 0.02 Lux B/W: 0.002 Lux, 0 Lux, IR Sensitive | 3-9mm, 1/3", F1.2, H-FOV = 92°-31° | 37fps | • | • | | | • | • | | • | • | |
| AV2225 | 1080p | 1920 x 1080 | Color: 0.1 Lux B/W: 0 Lux, IR Sensitive | 3-9mm, 1/2.7", F1.2, H-FOV = 115°-37°, (-S Models: 1/3", H-FOV = 82°-27°) | 31fps | • | | | | • | • | • | • | • | • |
| | | | | 8-22mm, 1/2.7", F1.6, Telephoto, H-FOV = 42°-16°, (-S Models: 1/3", H-FOV = 26°-11°) | | | | | | | | | | | |
| AV2226 | 1080p | 1920 x 1080 | Color: 0.3 Lux B/W: 0 Lux, IR Sensitive | 3-9mm, 1/3.2", F1.2, H-FOV = 85°-30° | 30fps | • | | • | | • | • | • | • | • | |
| | | | | 8-22mm, 1/3.2", F1.6, Telephoto, H-FOV = 30°-11° | | | | | | | | | | | |
| AV3225 | 3MP | 2048 x 1536 | Color (Non-Binning): 0.3 Lux (-S Models: 0.1 Lux) Color (Binning): 0.15 Lux (-S Models: 0.05 Lux) B/W: 0 Lux, IR Sensitive | 3-9mm, 1/2.5", F1.2, H-FOV = 87°-29°, (-S Models: 1/3") | 21fps | • | | | • | • | • | • | • | • | |
| | | | | 8-22mm, 1/2.5", F1.6, Telephoto, H-FOV = 28°-12°, (-S Models: 1/3") | | | | | | | | | | | |
| AV3226 | 3MP | 2048 x 1536 | Color (Non-Binning): 0.3 Lux Color (Binning): 0.15 Lux B/W: 0 Lux, IR Sensitive | 3-9mm, 1/3.2", F1.2, H-FOV = 90°-32° | 21fps | • | | • | • | • | • | • | • | • | • |
| | | | | 8-22mm, 1/3.2", F1.6, Telephoto, H-FOV = 32°-12° | | | | | | | | | | | |
| AV5225 | 5MP | 2592 x 1944 | Color (Non-Binning): 0.3 Lux Color (Binning): 0.15 Lux B/W: 0 Lux, IR Sensitive | 3.6-9mm, 1/2.5", F1.3, H-FOV = 96°-36° | 14fps | • | | | • | • | • | • | • | • | • |
| | | | | 9-22mm, 1/2.5", F1.6, Telephoto, H-FOV = 38°-16° | | | | | | | | | | | |
| AV10225 | 10MP | 3648 x 2752 | Color (Non-Binning): 0.42 Lux Color (Binning): 0.21 Lux B/W: 0 Lux, IR Sensitive | 4.7-9mm, 1/2.3", F1.5, H-FOV = 78.8°-37° | 7fps | • | | | • | • | • | • | • | • | |
| | | | | 12-22mm, 1/2.3", F2.2, Telephoto, H-FOV = 30°-17° | | | | | | | | | | | |

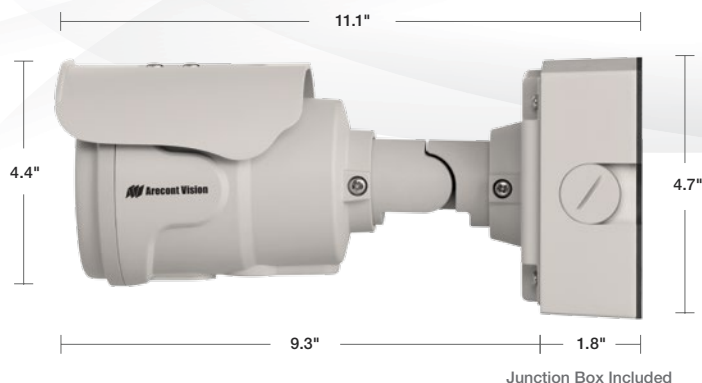
Options

Note: Not all options available on all models.

| | |
|-------|---|
| PMIR | Wide Angle Lens w/ Remote Focus/Zoom, P-Iris, True Day/Night, IR LEDs |
| PMTIR | Telephoto Lens w/ Remote Focus/Zoom, P-Iris, True Day/Night, IR LEDs |
| -S | SDHC Card Slot, CorridorView™ w/ 90° Image Flip, Non-Integer Scaling |
| -A | Audio |

(Example: AV5225PMIR-SA)

Configurations



Accessories

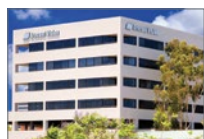
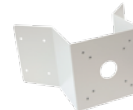
SV-EBA
Electrical Box Adapter



AV-PMA
Pole Mount Adapter



AV-CRMA
Corner Mount Adapter



Global Sales and Support

Arecont Vision is the leading manufacturer of high-performance megapixel IP cameras and associated software. All Arecont Vision cameras are made in the USA.

Americas

Los Angeles, CA, USA
Arecont Vision, LLC. Headquarters
425 E. Colorado St., 7th Floor
Glendale, CA 91205, USA

Phone: +1.818.937.0700
Toll Free: 877.CAMERA.8
Fax: +1.818.937.0464

Sales
Phone: +1.818.937.0700 x 3
Email: avsales@arecontvision.com

Support
Phone: +1.818.937.0700 x 1
Email: support@arecontvision.com

Latin America
Email: latam.sales@arecontvision.com

EMEA

Frankfurt, Germany
Phone: +49.69.6953.4600
Email: europe.sales@arecontvision.com

Moscow, Russia
CJSC Arecont Vision
Phone: +7.495.649.0577
Fax: +7.495.221.5227
Email: info@arecontvision.ru

Middle East
Email: mena.sales@arecontvision.com

Africa
Email: africa.sales@arecontvision.com

APAC

China
Phone: +86.180.0179.1799
Alt. Phone: +1.626.215.5300
Fax: +1.818.649.3404
Email: apac.sales@arecontvision.com

